

THREE

777 LOWNDES HILL ROAD
GREENVILLE, SC 29607



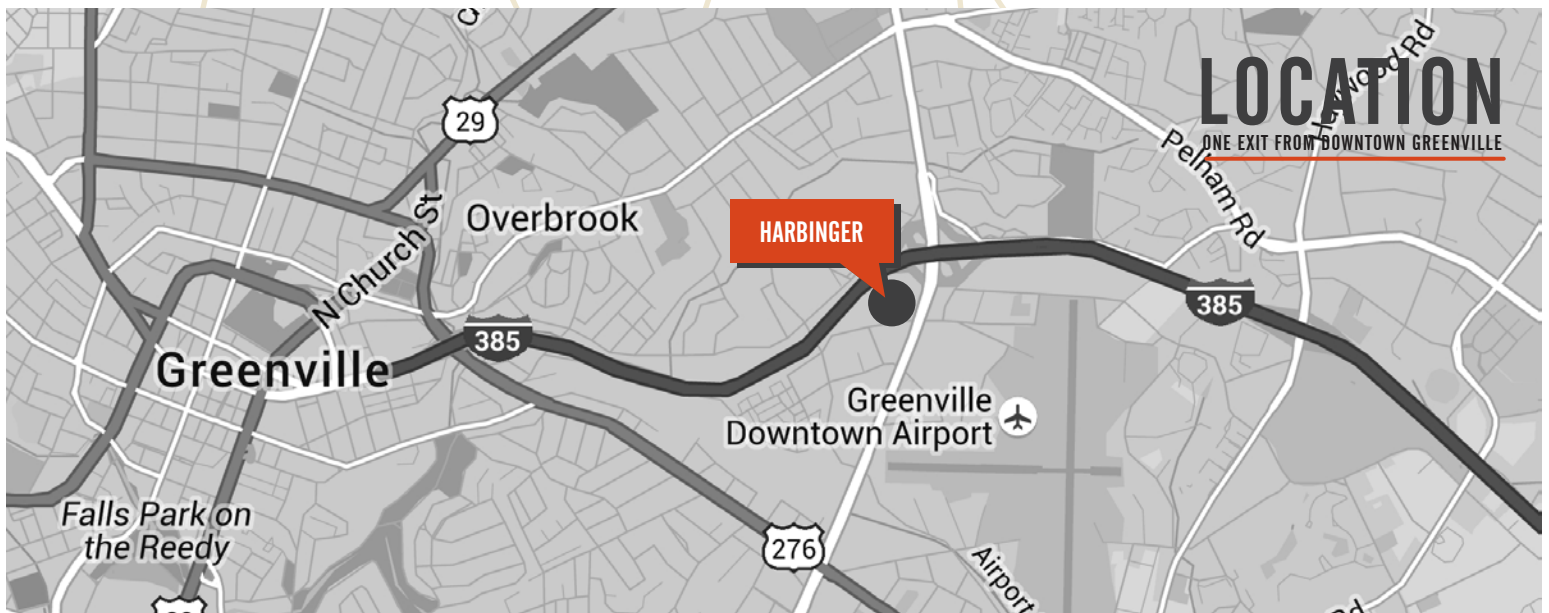
HARBINGER



±1,501 - ±17,978 RSF AVAILABLE | \$23.50/RSF FULL SERVICE

Harbinger is a fully amenitized, modern day office park that offers tenants a great working environment which results in talent recruitment and retention. This corporate business park is one exit away from Greenville's award winning & vibrant downtown. At Harbinger, you can enjoy proximity to downtown, without downtown prices or parking constraints.

Harbinger offers a professional modern environment with ample parking, interior and exterior upgrades, new signage and way finding, improved landscaping and exterior lighting and enhanced presence along the interstate. On-site amenities include a fitness center, shared meeting space and a central courtyard with campus wifi for all tenants to enjoy.





PROPERTY DETAILS

Building THREE is located inside a $\pm 160,000$ SF office park minutes from downtown Greenville.

$\pm 1,501$ RSF - 17,978 RSF Available

Suite 100, $\pm 3,485$ RSF

Suite 202, $\pm 1,501$ RSF

Suite 215, $\pm 5,613$ RSF

Suite 228, $\pm 2,198$ RSF

Suite 302, $\pm 5,181$ RSF

- Fitness center, conferencing space & canteen for tenant use
- Digital lobby directory with flat-screens
- Parking ratio: 4.07/1,000 SF
- Highly visible from I-385 & Pleasantburg Drive
- \$23.50/RSF Full Service

FITNESS CENTER



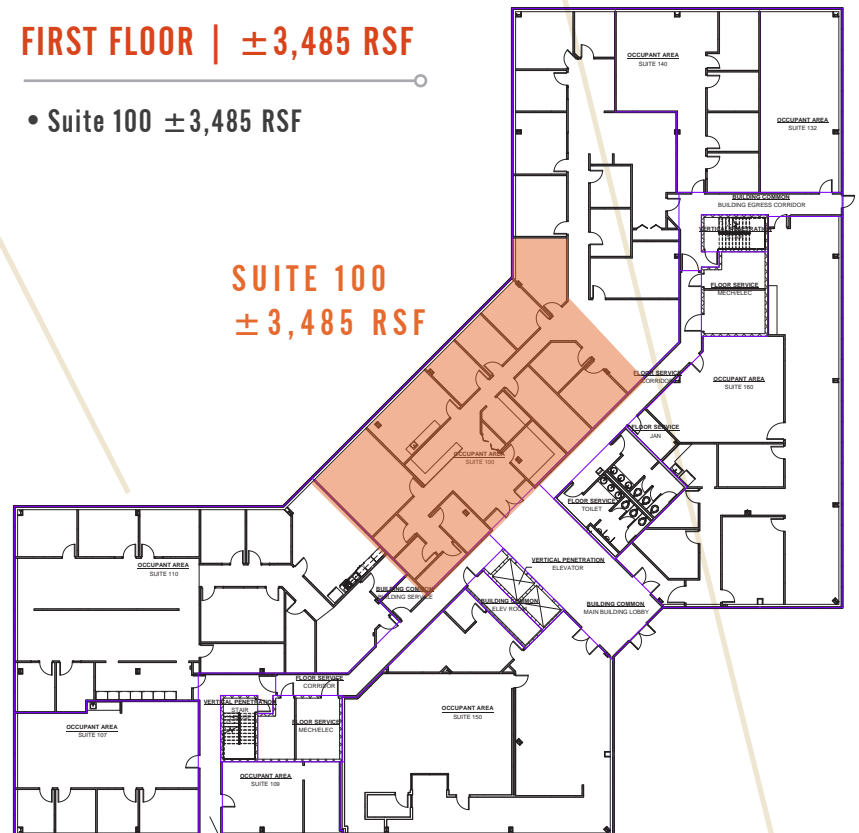
CANTEEN



CONFERCING SPACE

FIRST FLOOR | $\pm 3,485$ RSF

- Suite 100 $\pm 3,485$ RSF



Owner:

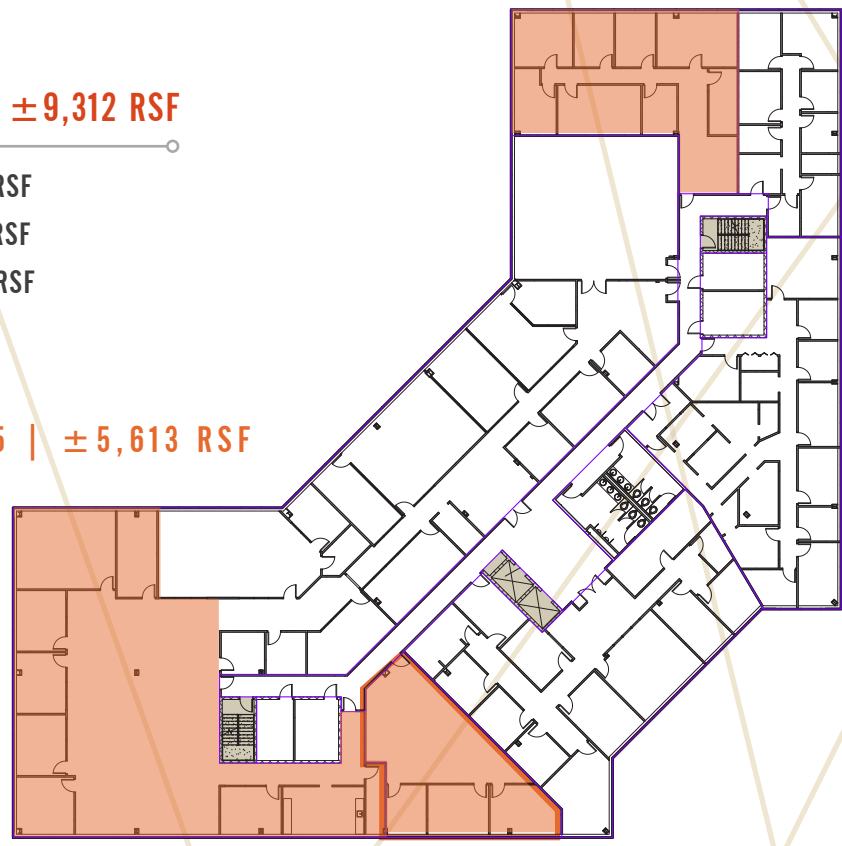


SUITE 228 | ±2,198 RSF

SECOND FLOOR | ±9,312 RSF

- Suite 202 ±1,501 RSF
- Suite 215 ±5,613 RSF
- Suite 228 ±2,198 RSF

SUITE 215 | ±5,613 RSF

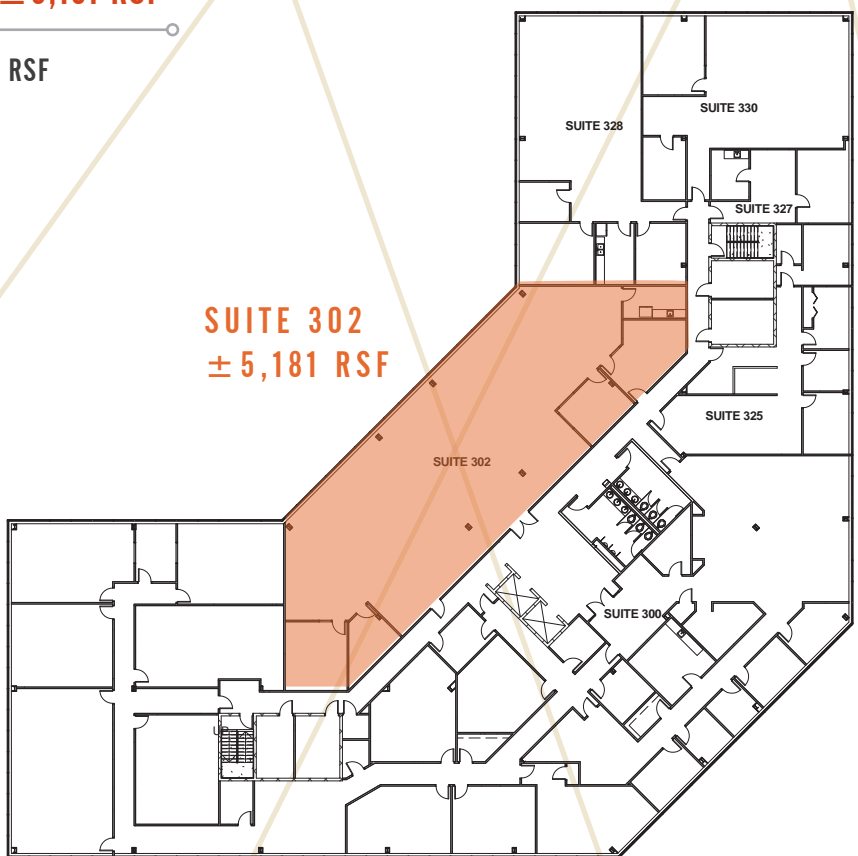


SUITE 202 | ±1,501 RSF

THIRD FLOOR | ±5,181 RSF

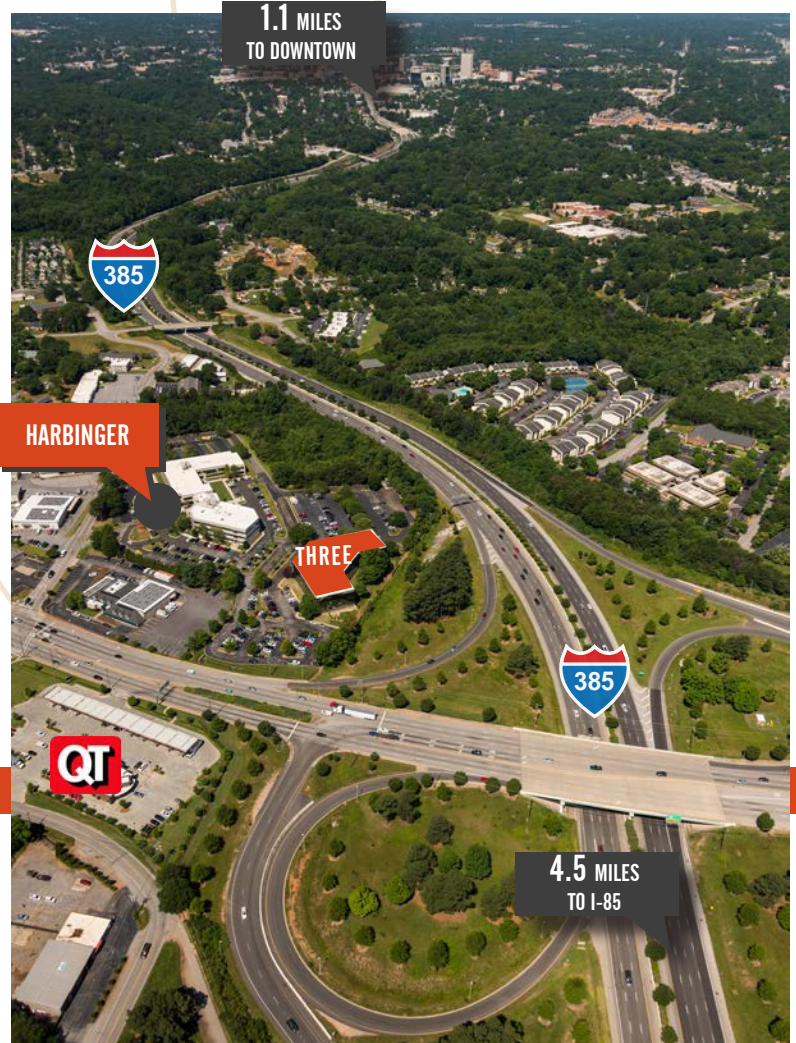
- Suite 302 ±5,181 RSF

SUITE 302
±5,181 RSF



THREE

777 LOWNDES HILL ROAD
GREENVILLE, SC 29607



CONTACT US:

SHELBY DODSON, LEED AP
+1 864 527 6022
SHELBY.DODSON@CBRE.COM

CHARLES GOUCH, CCIM, SIOR
+1 864 527 6035
CHARLES.GOUCH@CBRE.COM

BLAINE HART, SIOR
+1 864 527 6054
BLAINE.HART@CBRE.COM

Owner:

