



±70,028 SF Available For Lease

BUILDING

01





# Minutes Away From Downtown Greenville.

P  
R  
O  
P  
E  
R  
T  
Y  
D  
E  
T  
A  
I  
L  
S

- + Up to ±70,028 SF Available
- + Only 3 miles from Downtown Greenville
- + Convenient access to I-385
- + Parking: 3/1,000 SF
- + 138,544 SF Total Building (5 floors)
- + Lease Rate: \$17.00/RSF Full Service



NEW OWNERSHIP PLANS INCLUDE



New Landscaping



Lounge



Fitness Center



Café



Digital Flat Screen  
Lobby Directory



New Wayfinding  
to Tenant Space





# Leasing Opportunities



LL

01

02

03

LOWER LEVEL

FIRST FLOOR

SECOND FLOOR  
(MAIN LEVEL)

THIRD FLOOR

±4,877 SF

±20,197 SF

±27,842 SF

±17,112 SF

+ Suite A / 4,877 SF

+ Suite A / 20,197 SF

+ Suite B / 8,031 SF

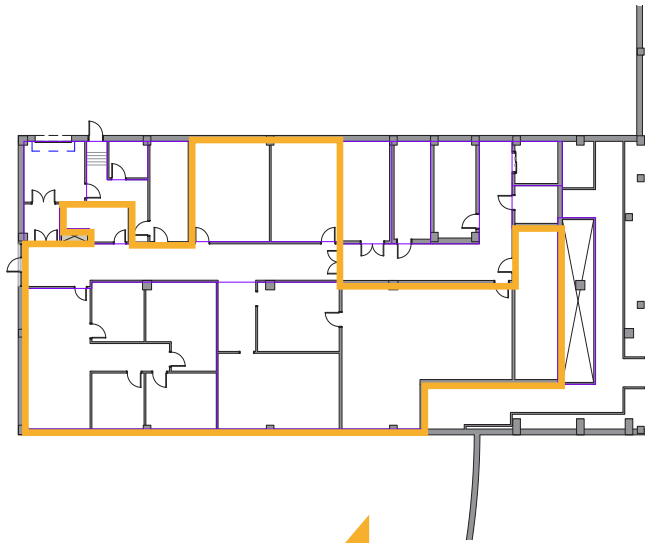
+ Suite A / 17,112 SF

+ Suite C / 12,553 SF

+ Suite D / 7,258 SF

LOWER LEVEL

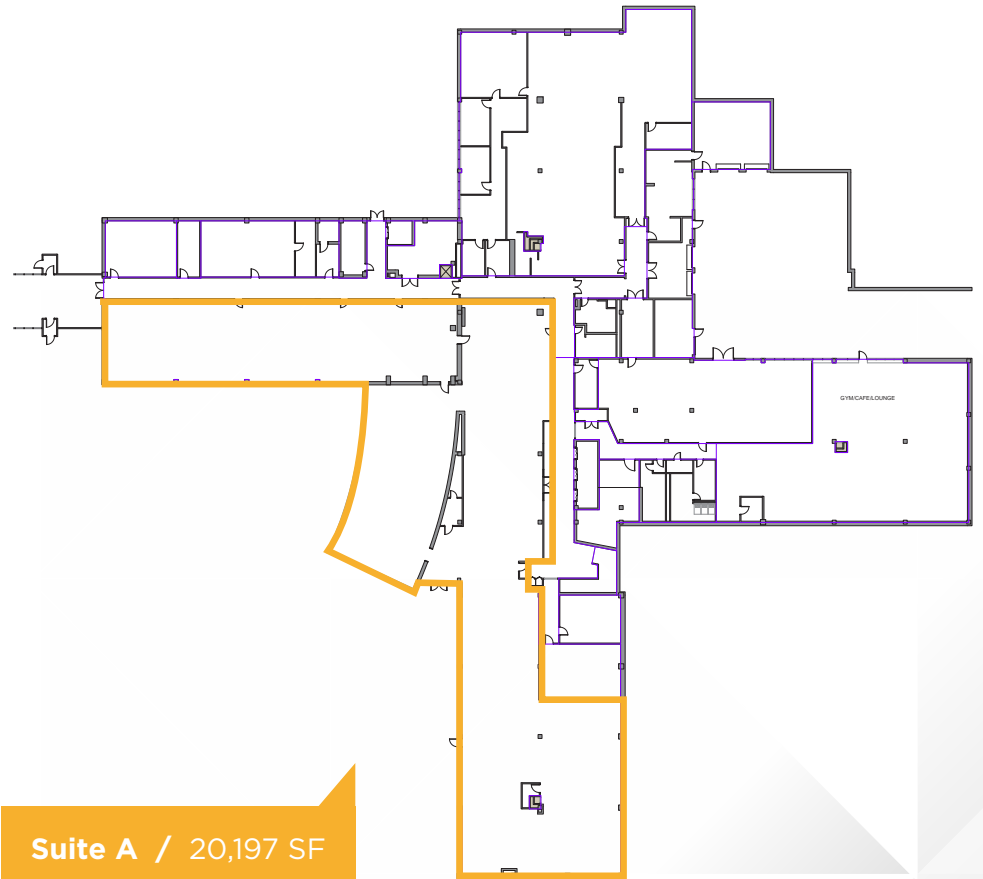
±4,877 SF



Suite A / 4,877 SF

FIRST FLOOR

±20,197 SF



Suite A / 20,197 SF

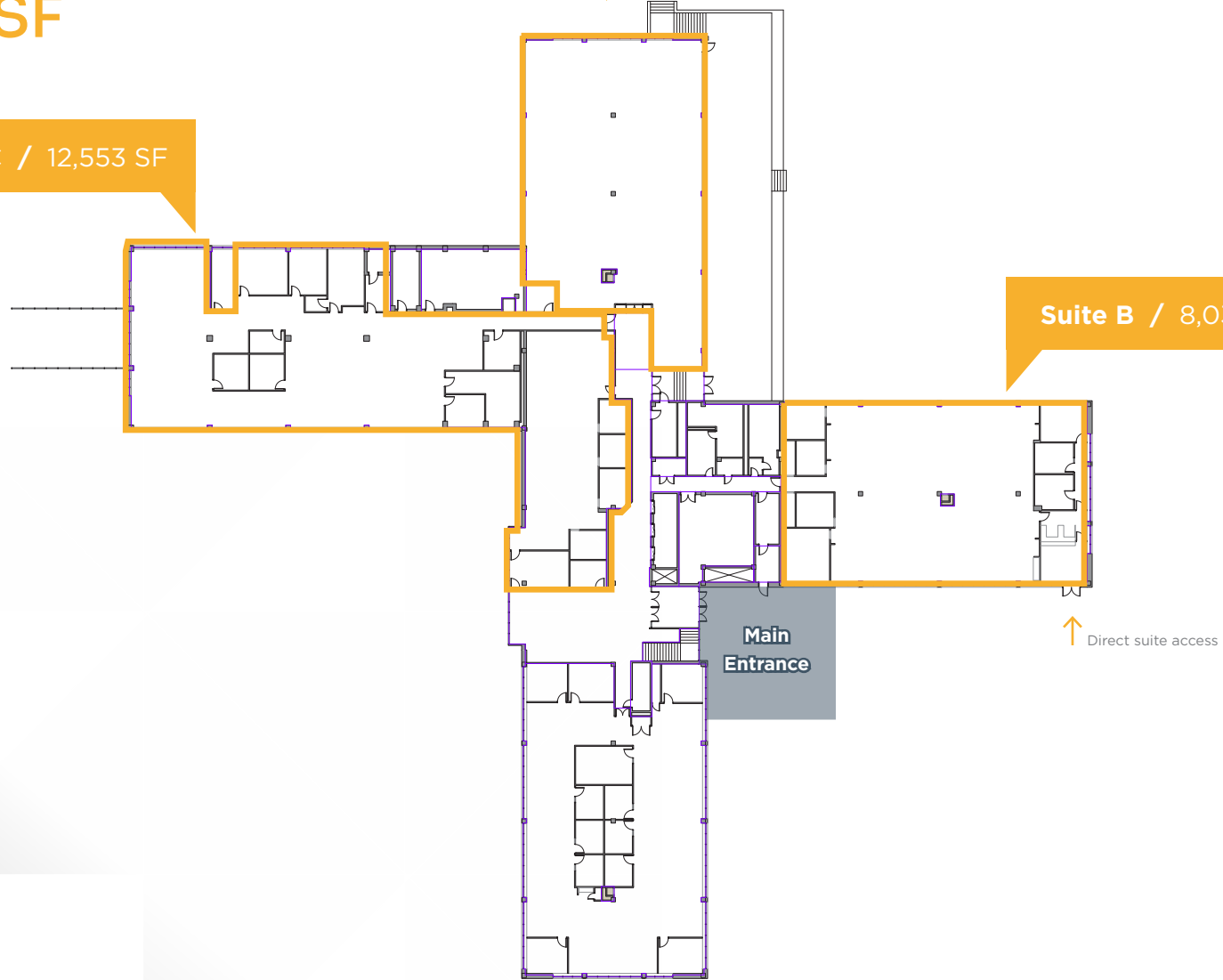
SECOND FLOOR (MAIN LEVEL)

±27,842 SF

Suite C / 12,553 SF

Suite D / 7,258 SF

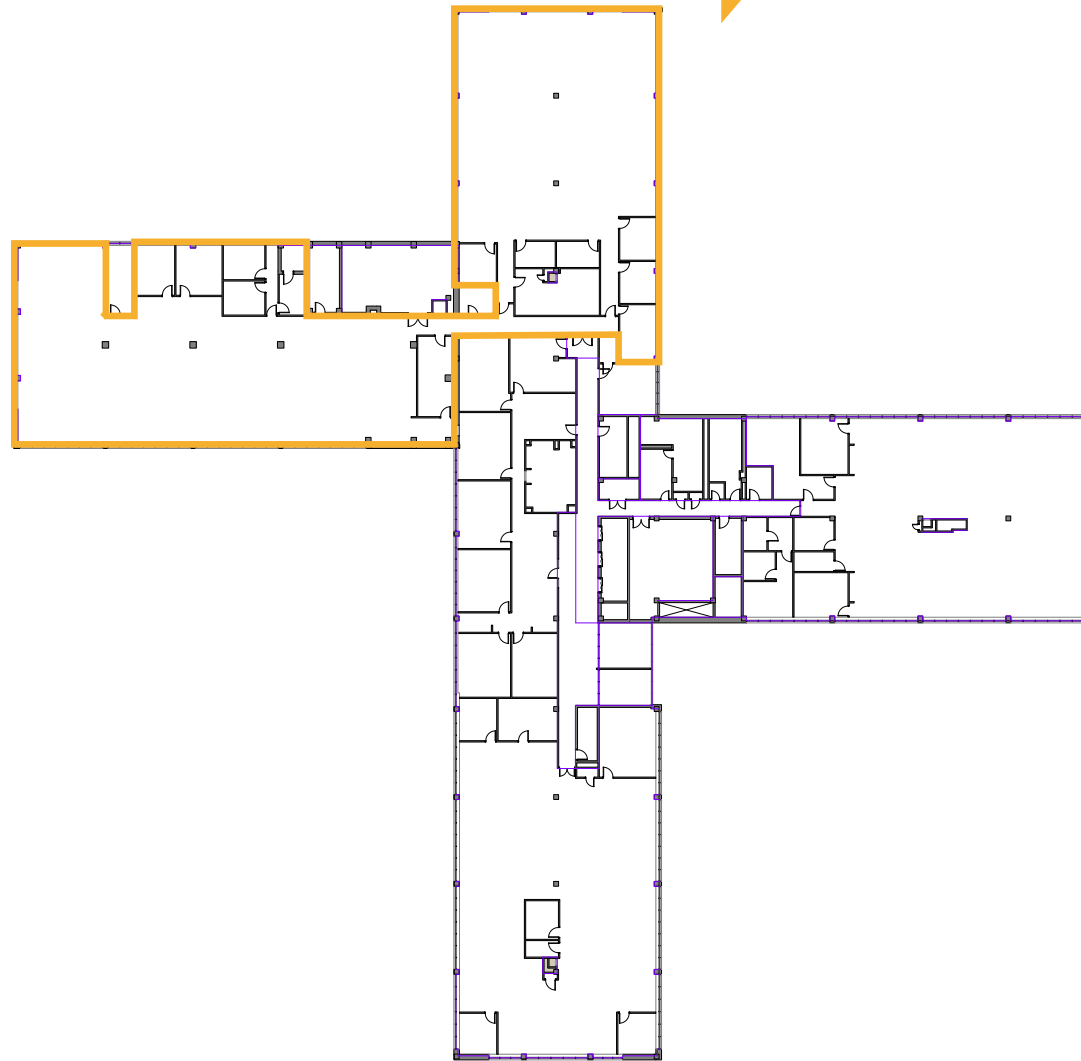
Suite B / 8,031 SF



THIRD FLOOR

±17,112 SF

Suite A / 17,112 SF





## C O N T A C T   U S

### **Charles Gouch, CCIM, SIOR**

Senior Vice President  
+1 864 527 6035  
charles.gouch@cbre.com

### **Blaine Hart, SIOR**

Senior Vice President  
+1 864 57 6054  
blaine.hart@cbre.com

### **Shelby Dodson, LEED AP**

First Vice President  
+1 864 527 6022  
shelby.dodson@cbre.com

[cbre.us/greenville](https://cbre.us/greenville)



© 2020 CBRE, Inc. All rights reserved. This information has been obtained from sources believed reliable, but has not been verified for accuracy or completeness. You should conduct a careful, independent investigation of the property and verify all information. Any reliance on this information is solely at your own risk. CBRE and the CBRE logo are service marks of CBRE, Inc. All other marks displayed on this document are the property of their respective owners, and the use of such logos does not imply any affiliation with or endorsement of CBRE. Photos herein are the property of their respective owners. Use of these images without the express written consent of the owner is prohibited. PMStudio\_March2019

**CBRE**