

TWO

777 LOWNDES HILL ROAD
GREENVILLE, SC 29607



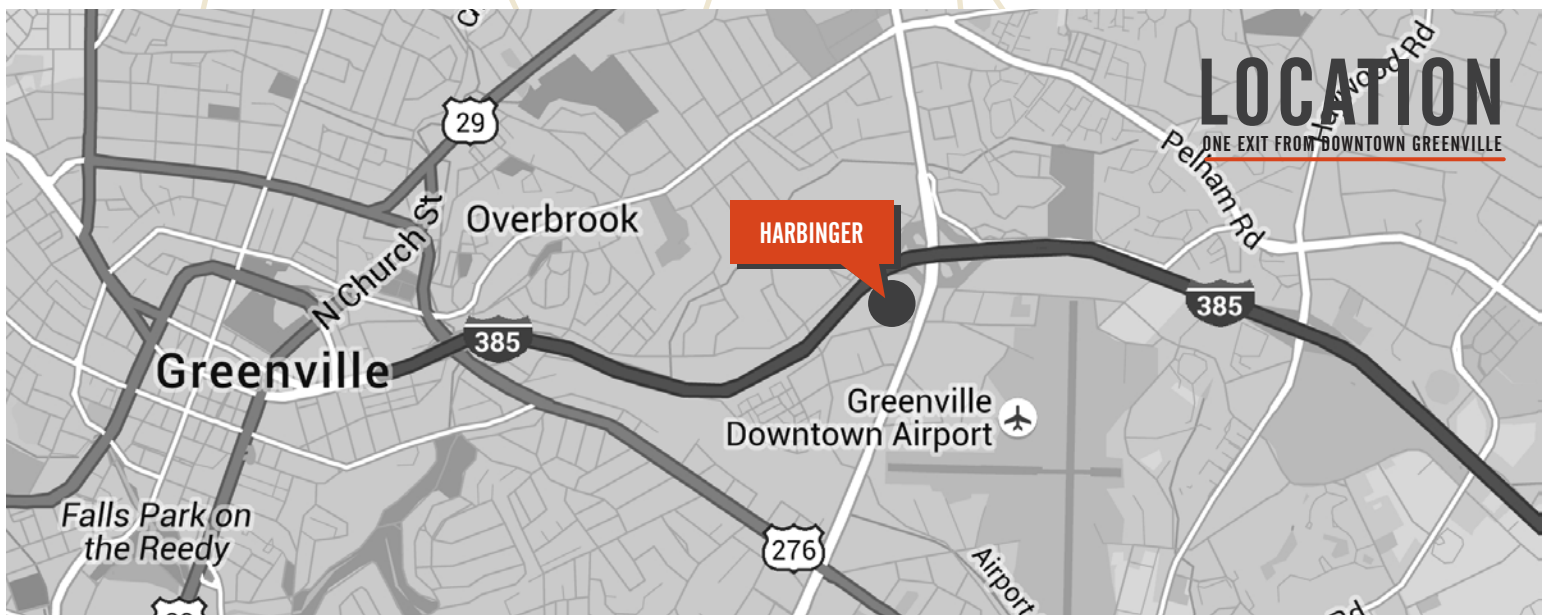
HARBINGER



NEW AVAILABILITIES | FULL FLOOR OPPORTUNITY | UP TO ±18,422 RSF AVAILABLE

Harbinger is a fully amenitized, modern day office park that offers tenants a great working environment which results in talent recruitment and retention. This corporate business park is one exit away from Greenville's award winning & vibrant downtown. At Harbinger, you can enjoy proximity to downtown, without downtown prices or parking constraints.

Harbinger offers a professional modern environment with ample parking, interior and exterior upgrades, new signage and way finding, improved landscaping and exterior lighting and enhanced presence along the interstate. On-site amenities include a fitness center, shared meeting space and a central courtyard with campus wifi for all tenants to enjoy.



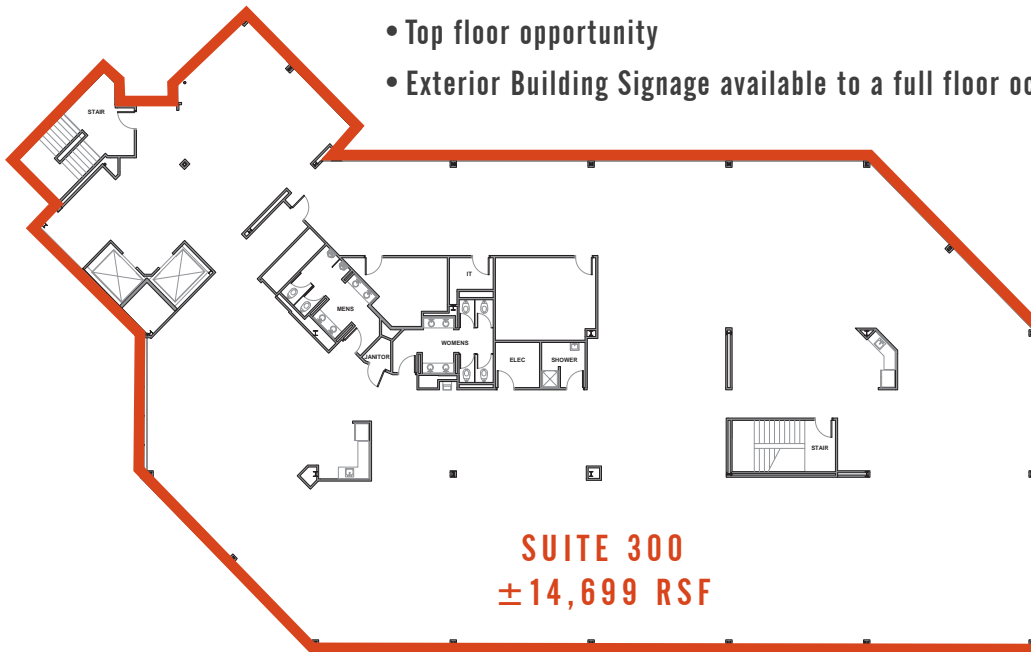


FULL FLOOR OPPORTUNITY AVAILABLE

THIRD FLOOR

±14,699 RSF Available

- Top floor opportunity
- Exterior Building Signage available to a full floor occupant



NEW FITNESS CENTER, CONFERCING SPACE & CANTEEN



TWO

777 LOWNDES HILL ROAD
GREENVILLE, SC 29607



CONTACT US:

SHELBY DODSON, LEED AP
+1 864 527 6022
SHELBY.DODSON@CBRE.COM

CHARLES GOUCH, CCIM, SIOR
+1 864 527 6035
CHARLES.GOUCH@CBRE.COM

BLAINE HART, SIOR
+1 864 527 6054
BLAINE.HART@CBRE.COM

Owner:

