

FOR LEASE

DOWNTOWN OFFICE

605

S ACADEMY STREET

Site #1642 Greenville, SC 29601



PROPERTY DETAILS

±12,000 SF OFFICE AVAILABLE

- + 52 on-site parking spaces
- + Building signage available
- + Lease Rate: \$13.00 PSF/NNN
- + High visibility in burgeoning West End
- + Currently built out as lab space and medical office
- + Located on S Academy Street less than a mile from the CBD
- + ±22,433 VPD on S Academy Street



www.cbre.com/greenville

CBRE

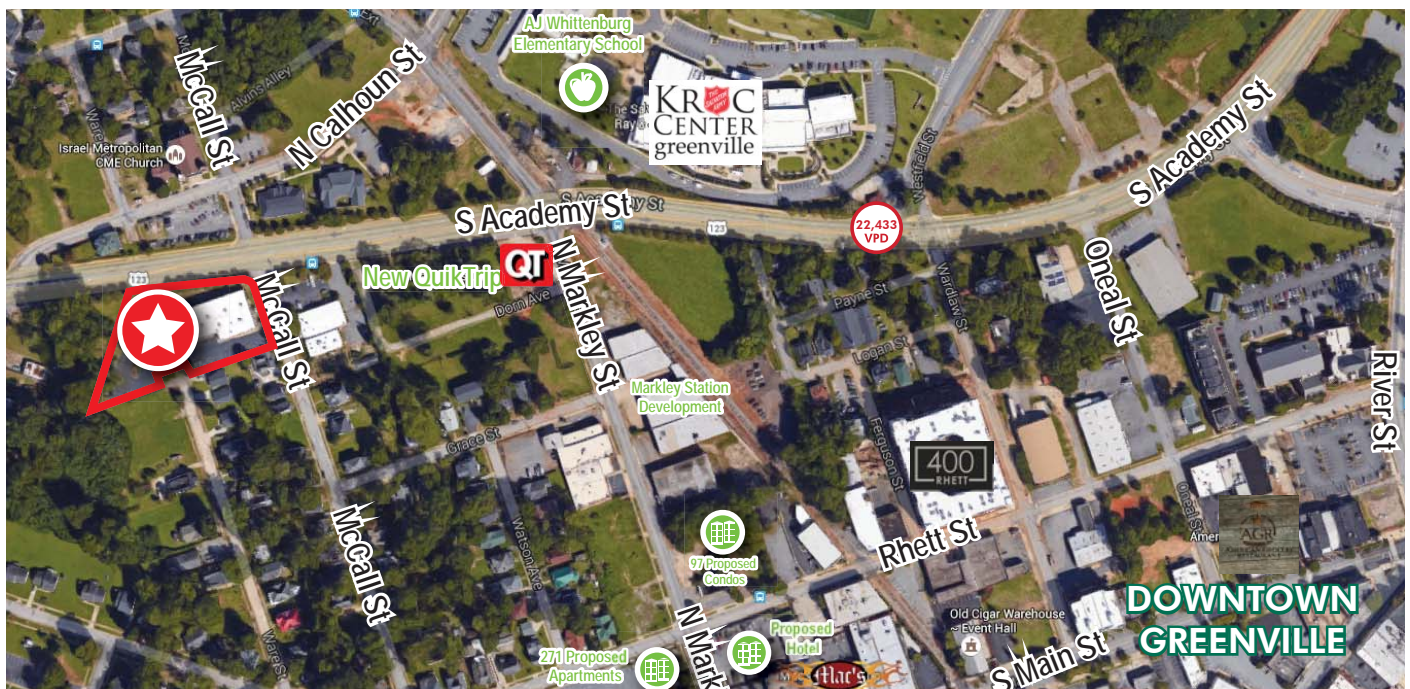
FOR LEASE 605 S ACADEMY STREET

SITE #1642
Greenville, SC 29601



PROPERTY DETAILS

- + 52 on-site parking spaces
- + Building signage available
- + Lease Rate: \$13.00 PSF/NNN
- + High visibility in burgeoning West End
- + Currently built out as lab space and medical office
- + Located on S Academy Street less than a mile from the CBD
- + ±22,433 VPD on S Academy Street



CONTACT US

CHARLES GOUCH, CCIM, SIOR

Senior Vice President | Office
+1 864 527 6035
charles.gouch@cbre.com

© 2017 CBRE, Inc. All rights reserved. This information has been obtained from sources believed reliable, but has not been verified for accuracy or completeness. Any projections, opinions, or estimates are subject to uncertainty. The information may not represent the current or future performance of the property. You and your advisors should conduct a careful, independent investigation of the property and verify all information. Any reliance on this information is solely at your own risk. CBRE and the CBRE logo are service marks of CBRE, Inc. and/or its affiliated or related companies in the United States and other countries. All other marks displayed on this document are the property of their respective owners. Photos herein are the property of their respective owners and use of these images without the express written consent of the owner is prohibited.

www.cbre.com/greenville

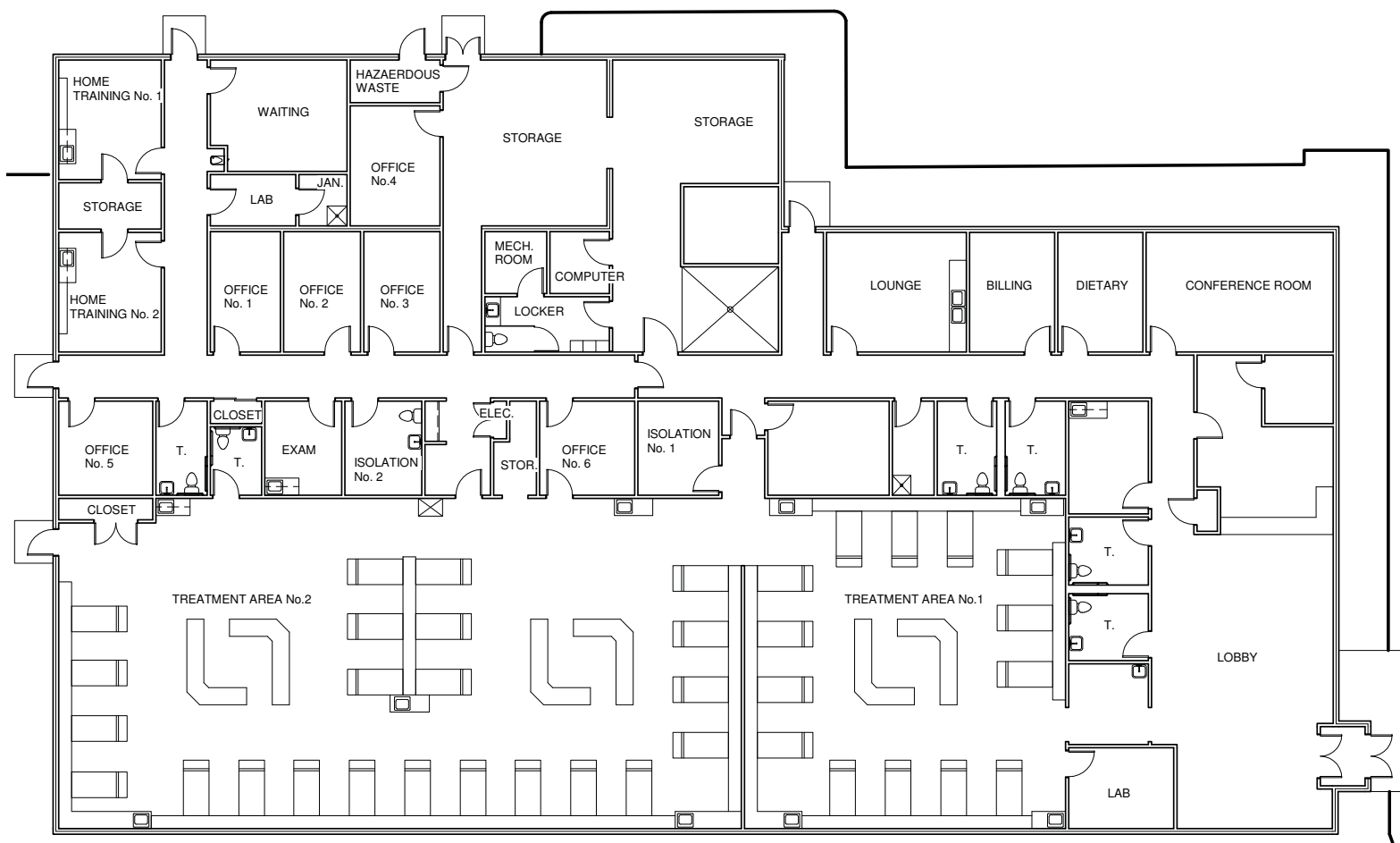
CBRE

FOR LEASE 605 S ACADEMY STREET

SITE #1642
Greenville, SC 29601



FLOOR PLANS



CONTACT US

CHARLES GOUCH, CCIM, SIOR

Senior Vice President | Office
+1 864 527 6035
charles.gouch@cbre.com

www.cbre.com/greenville

CBRE