

FOR SUBLEASE

# 211 BI-LO BLVD

SECOND FLOOR AVAILABLE

MAULDIN, SC 29607

Site #1725

±21,846 RSF AVAILABLE



## PROPERTY DETAILS

±21,846 RSF | SECOND FLOOR AVAILABLE

- + Former Bi-Lo headquarters office
- + Ample on-site parking
- + Wooded, campus style feel with walking trails and outdoor sitting areas
- + Mostly open space with large conference rooms, training room and executive offices
- + Located off of Laurens Road at Forrester Drive, just past the CU-ICAR campus, with easy access to I-85
- + Ideal campus for a charter school, corporate headquarters or a single tenant user
- + Master lease expires February 11, 2026
- + Asking Rate: \$13.00/RSF Full Service  
TI Allowance: \$1/RSF/year of lease term  
Free rent: to be negotiated depending on credit, etc.

[www.cbre.com/greenville](http://www.cbre.com/greenville)

**CBRE**

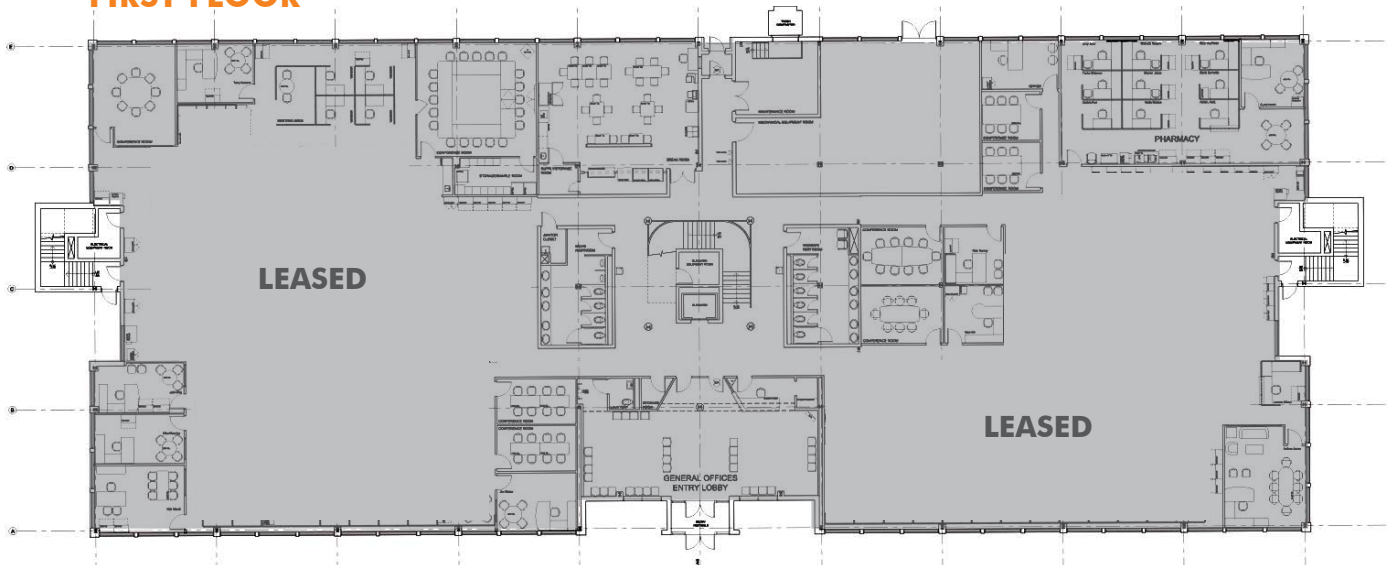
# FOR SUBLEASE 211 BI-LO BLVD

**SITE #1725**  
Mauldin, SC 29607

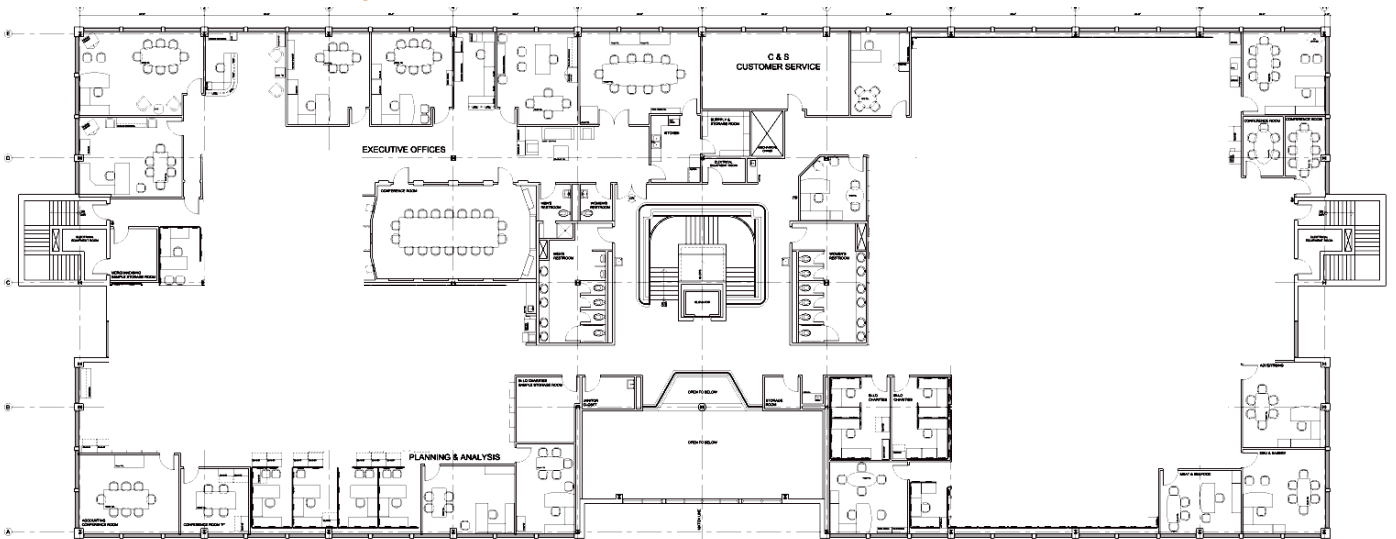


## FLOOR PLANS

### FIRST FLOOR



### SECOND FLOOR | ±21,846 RSF



© 2019 CBRE, Inc. All rights reserved. This information has been obtained from sources believed reliable, but has not been verified for accuracy or completeness. Any projections, opinions, or estimates are subject to uncertainty. The information may not represent the current or future performance of the property. You and your advisors should conduct a careful, independent investigation of the property and verify all information. Any reliance on this information is solely at your own risk. CBRE and the CBRE logo are service marks of CBRE, Inc. and/or its affiliated or related companies in the United States and other countries. All other marks displayed on this document are the property of their respective owners. Photos herein are the property of their respective owners and use of these images without the express written consent of the owner is prohibited.

# FOR SUBLEASE 211 BI-LO BLVD

**SITE #1725**  
Mauldin, SC 29607



## PROPERTY PHOTOS



## CONTACT US

**CHARLES GOUCH, CCIM, SIOR**

Senior Vice President  
+1 864 527 6035  
charles.gouch@cbre.com