

Available Industrial Site South Greenville Enterprise Park 875.00 Acres



Location

LOCATION: Hwy 25 & Bessie Road
COMMUNITY: Greenville, SC
COUNTY: Greenville

Description

MINIMUM ACRES: 40.00 Acres
MAXIMUM ACRES: 875.00 Acres
SUBDIVIDE: Yes
CURRENT USE: Agriculture / Undeveloped
SURROUNDING AREA: Industrial / Agriculture / Residential
TOPOGRAPHY: 774' to 935'

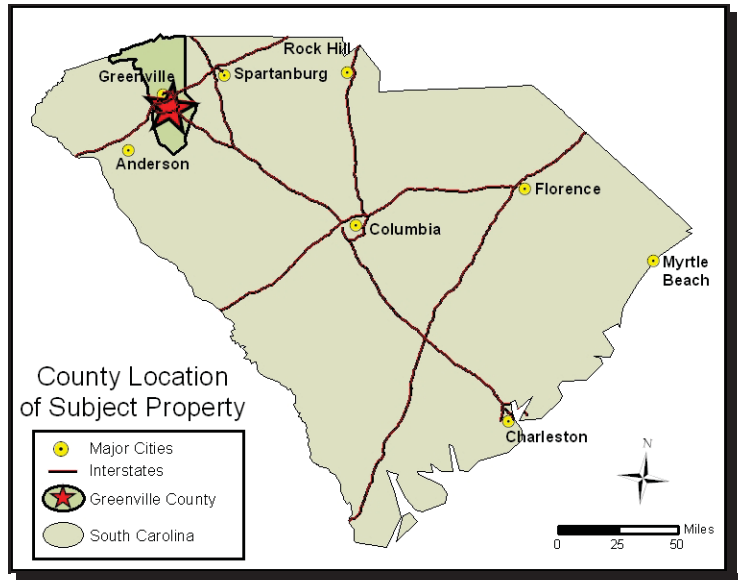
Taxes and Zoning

ZONED INDUSTRIAL: Unzoned
RESTRICTIONS: Unzoned, residential
TAXMAP:
TAX DISTRICT: 46 / 47
MILLAGE RATE: 286.10 / 291.80 (2014)
FOREIGN TRADE ZONE: No
FIRE DISTRICT: South Greenville
FIRE RATING: 3

Sales

MIN. PRICE ACRE: \$45,000
MAX. PRICE PER ACRE: \$65,000
LEASE:
SOURCE: John Montgomery
 Colliers International
 (864) 297-4950

Comments



Utilities

WATER: Greenville Water System 16"
 Along US 25
GAS: Piedmont Natural Gas 4"
 Along US 25
SEWER: ReWa / Metro Sewer Sub District 12"
 at western/southern boundary of site
ELECTRICITY: Duke Energy
 100 kV, 12 kV lines

Transportation and Access

INTERSTATE: I-185 0.4 Miles
ALT. HIGHWAY: US Highway 25 0.0 Miles
PRIMARY AIRPORT: GSP International Airport 18.1 Miles
CIVIL AIRPORT: Donaldson Field at SC-TAC 6.3 Miles
PORT: Charleston 209.0 Miles
RAIL: None

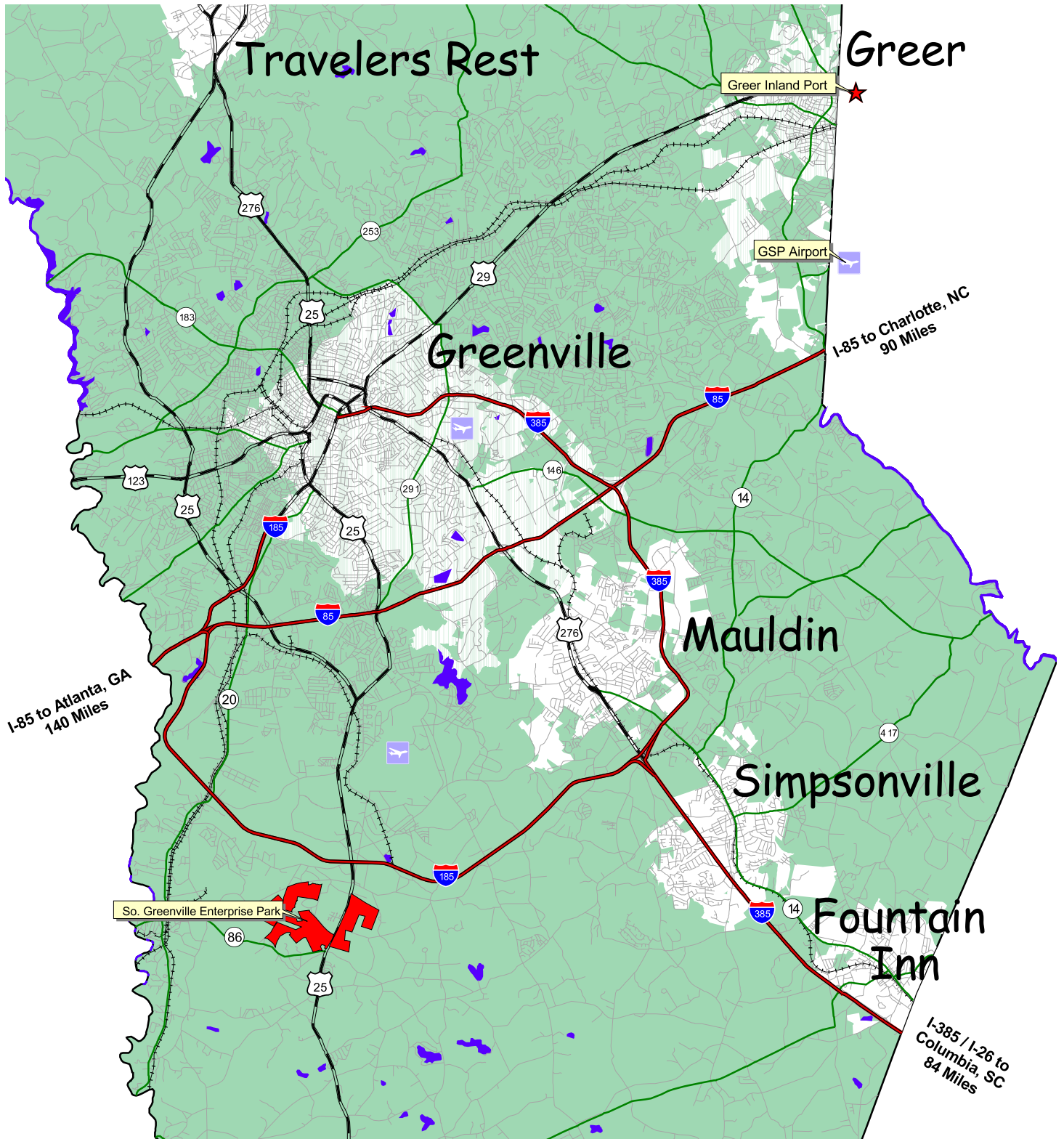
For Additional Information Contact:

Greenville Area Development Corporation
 Phone: 864-235-2008
 Fax: 864-235-9030



No warranty or representation, expressed or implied, is made regarding the accuracy of this data, and same is subject to omissions, errors, and changes. This report is in accordance with the terms and agreements of the InfoMentum License Agreement. This information was compiled by the Greenville Area Development Corporation.

So. Greenville Enterprise Park: Location Map



I-85 to Atlanta, GA
140 Miles









I-85 to Charlotte, NC
90 Miles

I-385 / I-26 to
Columbia, SC
84 Miles



This map is a product of the SC Appalachian Council of Governments InfoMentum Program. The Appalachian Council of Governments and the Greenville Area Development Corporation expressly disclaims any responsibility or liability with regard to the use of this map.



-  Airports
-  Interstates
-  US Highways
-  SC Highways
-  Roads
-  Lakes & Ponds
-  Municipalities
-  County