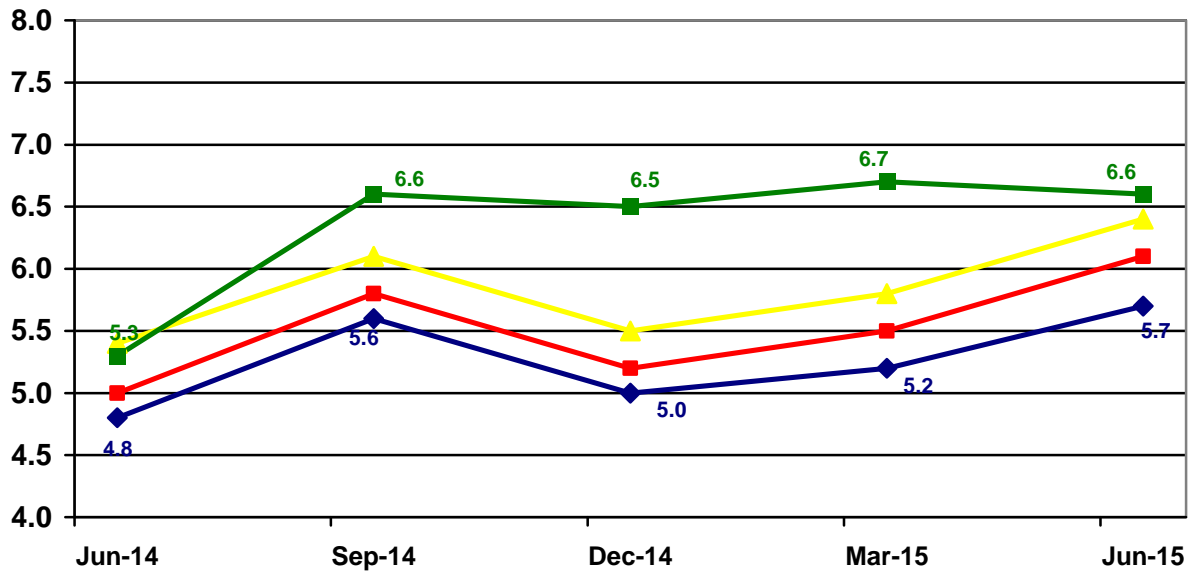


### Unemployment Rate (%)

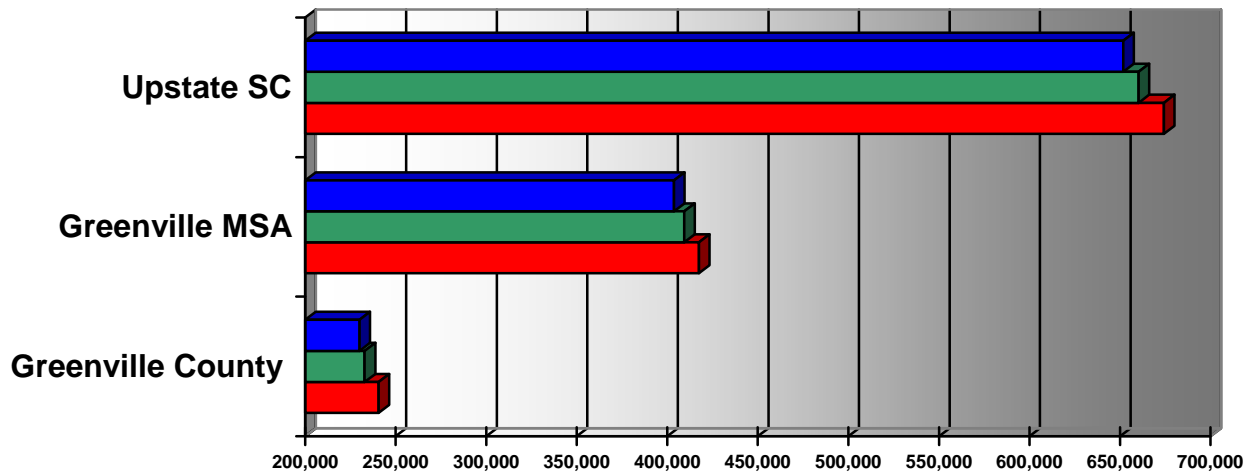
Source: SC Department of Workforce and Employment



	Jun-14	Sep-14	Dec-14	Mar-15	Jun-15
◆ Greenville County	4.8	5.6	5.0	5.2	5.7
■ Greenville MSA*	5.0	5.8	5.2	5.5	6.1
▲ Upstate SC	5.4	6.1	5.5	5.8	6.4
■ SC	5.3	6.6	6.5	6.7	6.6

### Civilian Labor Force

Source: SC Department of Workforce and Employment



	Greenville County	Greenville MSA	Upstate SC
■ Jun-13	229,977	403,708	651,768
■ Jun-14	232,966	409,389	660,250
■ Jun-15	240,573	417,416	674,195

The Greenville MSA is comprised of Greenville, Anderson, Laurens and Pickens Counties; prelim numbers

### Civilian Labor Force

Source: SC Department of Workforce and Employment

	Jun-14	Sep-14	Dec-14	Mar-15	Jun-15
Greenville County	232,788	232,062	232,470	235,828	240,573
Greenville MSA	409,209	407,650	408,952	408,779	6417,416
Upstate Region	659,907	656,523	660,256	659,232	674,195

### Number of Unemployed

Source: SC Department of Workforce and Employment

	Jun-14	Sep-14	Dec-14	Mar-15	Jun-15
Greenville County	12,037	12,937	11,597	12,277	13,636
Greenville MSA	20,582	23,597	21,359	22,590	25,332
Upstate Region	35,663	42,762	36,433	41,258	43,223

### Number of Employed

Source: SC Department of Workforce and Employment

	June-14	Sep-14	Dec-14	Mar-15	Jun-15
Greenville County	221,647	219,125	220,873	223,551	226,937
Greenville MSA	388,627	384,053	387,593	386,189	392,084
Upstate Region	624,244	616,298	623,823	620,725	630,972

Greenville MSA is comprised of Greenville, Anderson, Laurens and Pickens Counties; prelim numbers.

### Greenville County Quarterly Census of Employment 4th Quarter 2014 (latest available)

Source: Bureau of Labor Statistics, SC Dept. of Employment & Work; *SC Works Online Services*

Industry Code (NAICS)	Industry	Average Number of Establishments	Average Employment
10	<b>Total, all industries</b>	<b>13,073</b>	<b>252,700</b>
1011	Natural Resources and Mining	26	164
1012	Construction	1,124	11,046
1013	Manufacturing	703	28,501
1021	Trade, Transportation and Utilities	2,984	50,196
1022	Information	230	5,962
1023	Financial Activities	1,414	12,940
1024	Professional & Business Services	2,672	54,927
1025	Education and Health Services	1,359	49,924
1026	Leisure and Hospitality	1,289	26,374
1027	Other Services	1,185	5,757
1028	Public Administration	87	7,309

### Cost of Living for Selected Cities 2011-2015

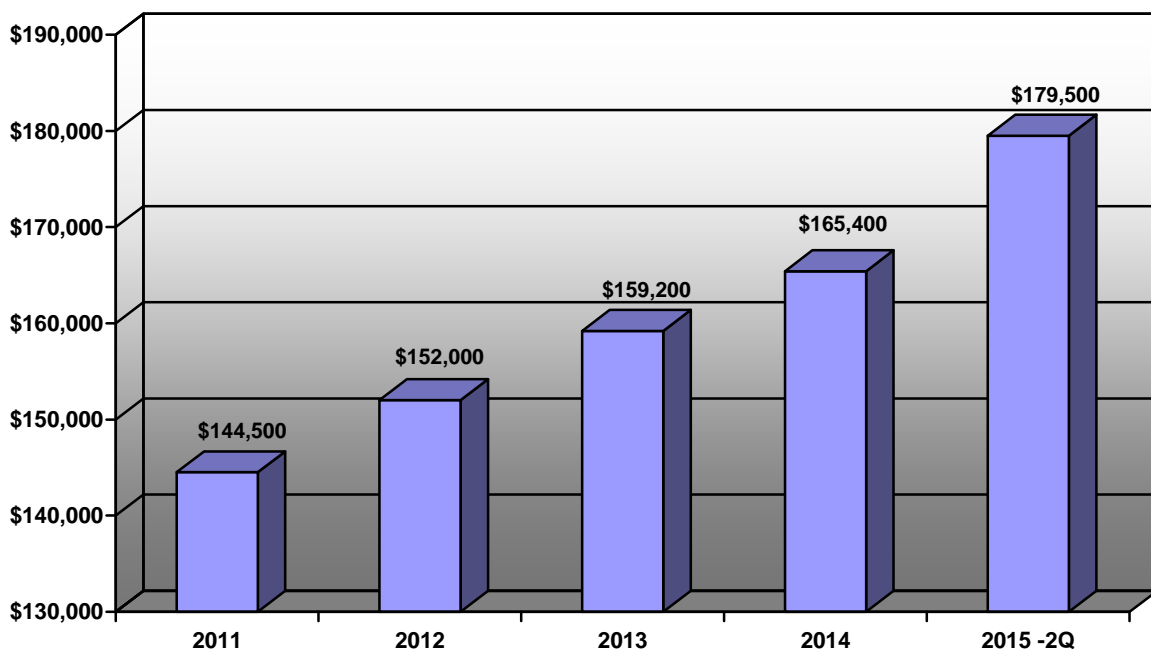
Source: Infomentum / [www.coli.org](http://www.coli.org)

Year	Composite Index	Greenville, SC	Atlanta, GA	Charleston, SC	Asheville, NC
2011	Annual Average	92.3	97.3	99.7	101.7
2012	Annual Average	93.1	96.9	98.4	101.2
2013	Annual Average	93.2	95.3	100.2	103.6
2014	Annual Average	94.6	99.6	100.8	104.8
2015	1 <sup>st</sup> Quarter	97.1	101.6	101.0	99.8
2015	2 <sup>nd</sup> Quarter	90.2	98.5	100.4	96.6

National Average = 100.0

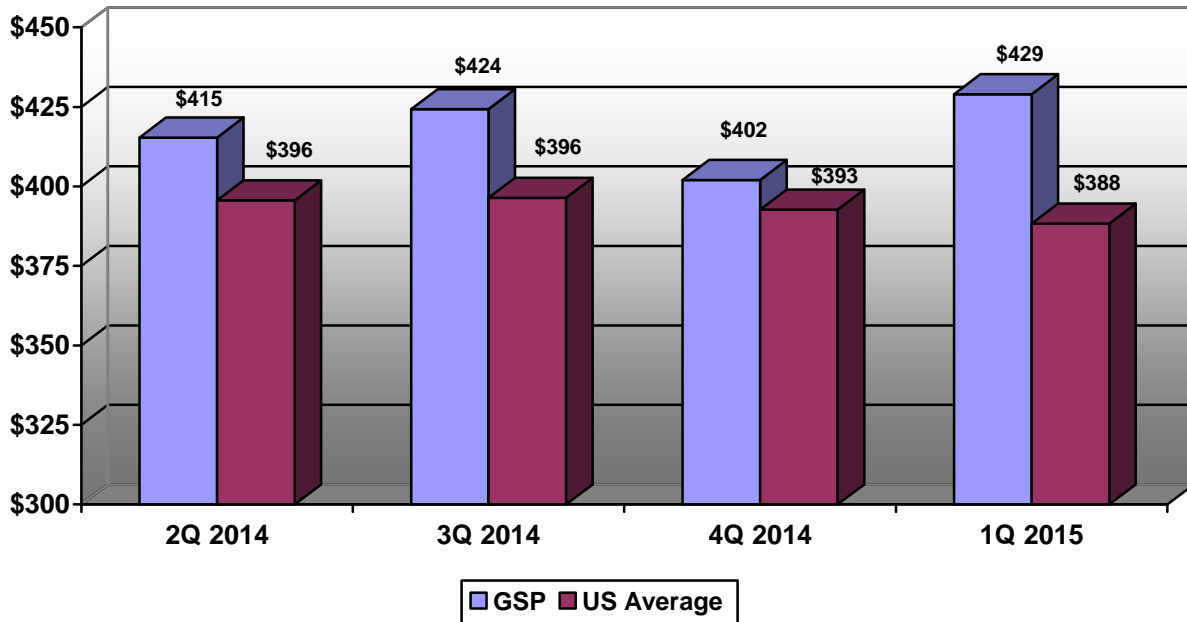
### Median Sales Price of Existing Single Family Homes Greenville Metro Area, 2011- 2015(p)

Source: National Association of Realtors website



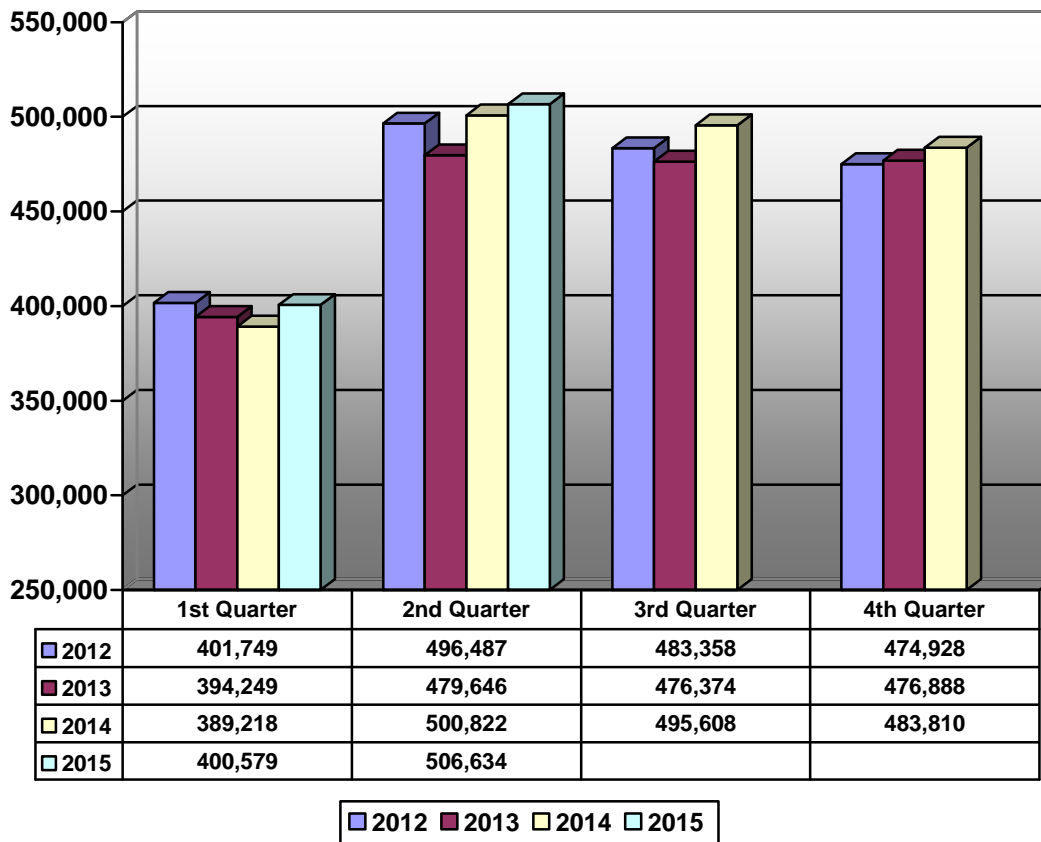
**Cost of Average Domestic Airfare at GSP (latest available)**

Source: ([www.bts.gov](http://www.bts.gov))



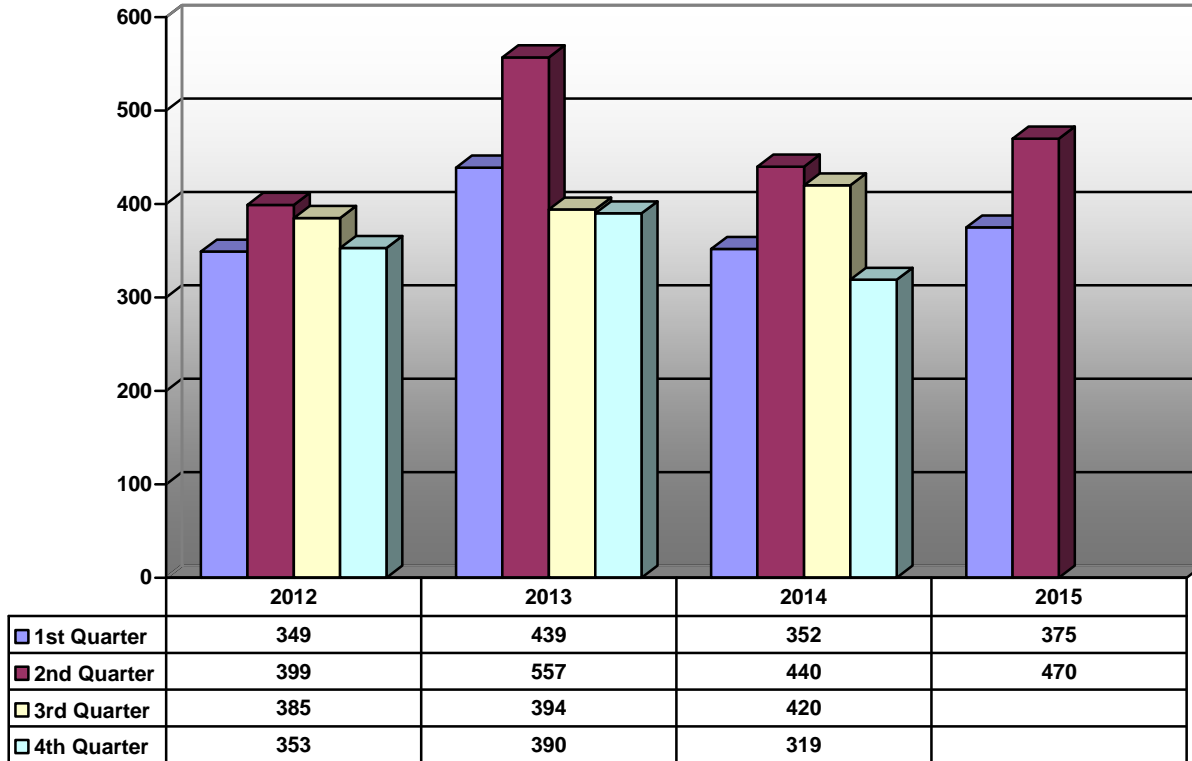
**GSP Airport Passengers (Total)**

Source: GSP



### Residential Building Permit Activity New Dwelling Starts – Greenville County (unincorporated area)

Source: Greenville County Codes Enforcement



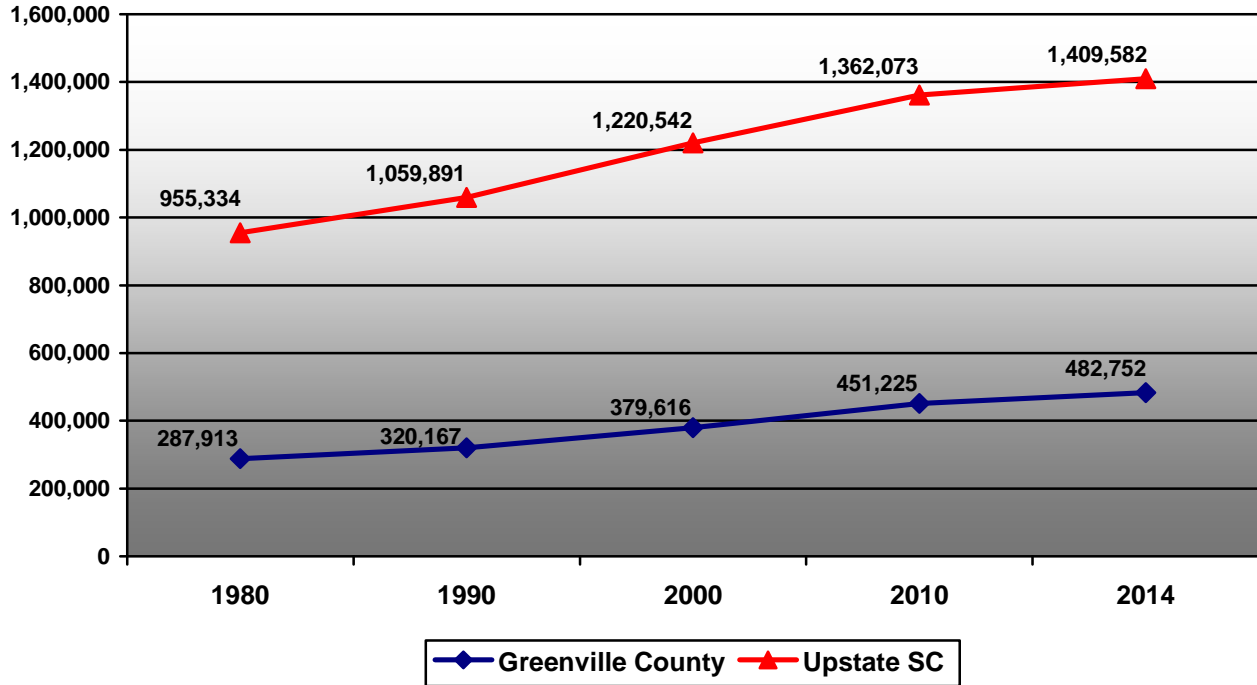
### Commercial Building Permit Activity New Construction Permits Issued – Greenville County

Source: Greenville County Codes Enforcement

	2012 Permits	2013 Permits	2014 Permits	2015 Permits
1 <sup>st</sup> Quarter	98	94	50	129
2 <sup>nd</sup> Quarter	99	96	143	160
3 <sup>rd</sup> Quarter	98	72	173	
4 <sup>th</sup> Quarter	107	54	165	
Total	402	316	531	

### Population Growth Greenville County and Upstate South Carolina

Source: US Bureau of the Census



### Components of Population Change Greenville County

Source: US Bureau of the Census

