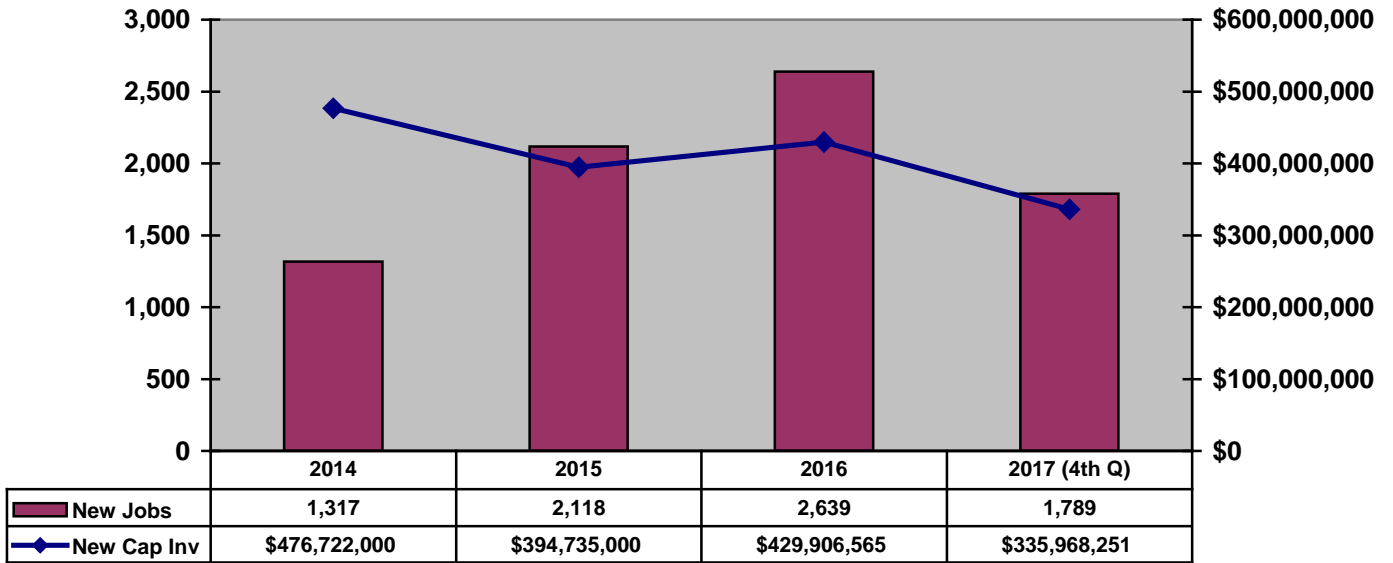


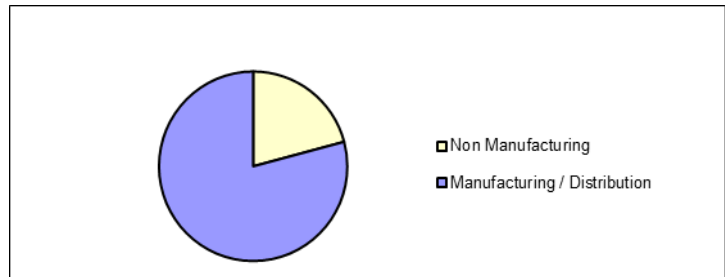
Announced New Job Creation and Capital Investment 2014 thru 4th Quarter 2017

Source: GADC

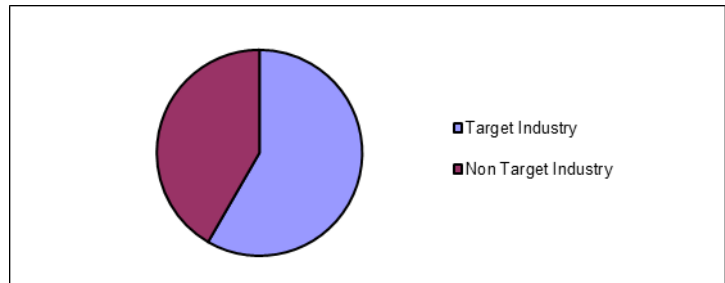


2017 Success by Type

Non Manufacturing	5
Manufacturing / Distribution	19
Total	24



Target Industry	14
Non Target Industry	10
Total	24



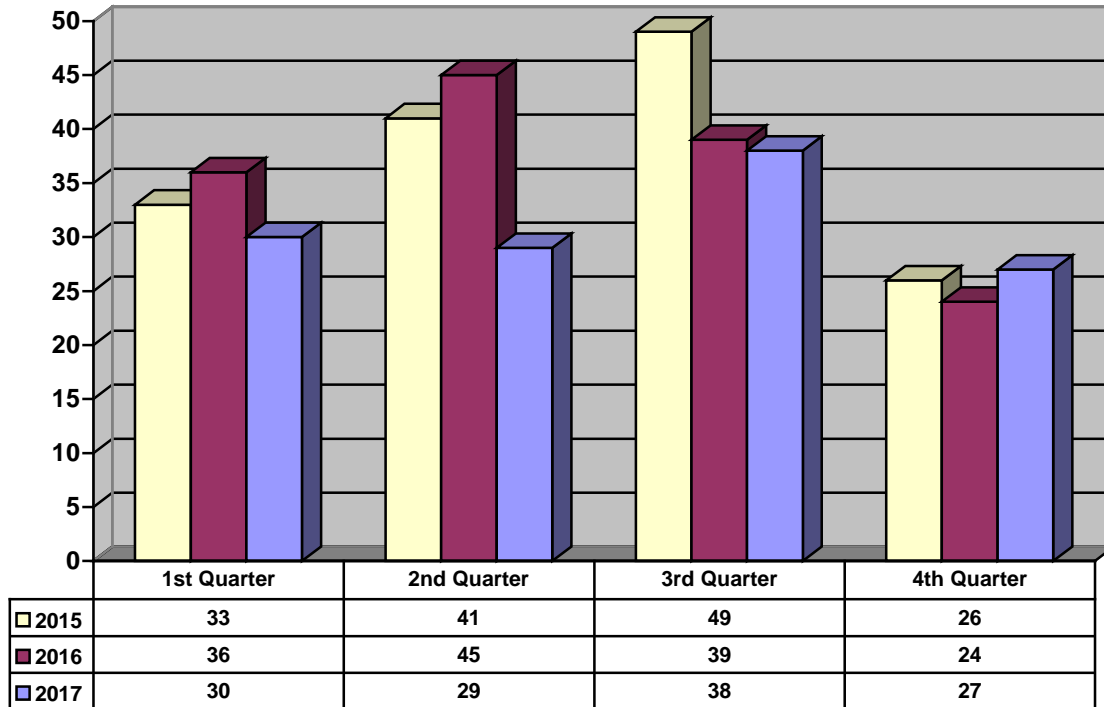
2017 Announced Capital Investment and Job Creation Greenville County, South Carolina

Date	Company	Product	Investment	Jobs	Type
1-26	Response Packaging	Mfg – Returnable packaging	\$5,000,000	100	E
2-14	Sencorables, LLC	R&D - IoT (Internet of Things) digital sensing products	\$3,500,000	25	N
2-16	BB&T	Office – Mortgage servicing center	\$30,000,000	0	E
2-16	Verizon	Office – Customer service and telesales center	\$3,500,000	260	E
3-8	AVX	Mfg – Electronic passive components	\$35,000,000	102	E
3-15	Gower / MP Husky	Mfg - Cable tray and cable bus systems	INR	50	E
4-12	Stren-Flex	Mfg - Synthetic lifting products	\$1,000,000	25	N
4-27	Caristrap	HQ / Mfg – Strapping, buckles, tensioners, etc.	\$5,500,000	100	N
4-28	JSI Store Fixtures, Inc	Mfg – High-quality merchandising displays	\$2,100,000	97	N
5-2	Moore’s Food Resources	Mfg – Flavor ingredient and food services	\$15,000,000	182	N
6-16	Softbox Systems	HQ / Mfg- Temperature controlled packaging	\$10,200,000	70	E
7-11	Honeywell Aerospace	Mfg- Turbine engines in aerospace industry	\$32,000,000	30	E
7-19	Kloeckner Metals Corp	Mfg- Metal processor and distributor	\$11,300,000	19	E
8-9	Bona Fide Kayaks	Mfg- Fishing Kayaks	\$2,000,000	76	N
8-23	bo parts GmbH	Mfg- Tier 1 and Tier 2 automotive parts supplier	\$4,100,000	100	N
9-20	Roy Metals	Mfg- Industrial coatings	\$30,000,000	40	E
10-18	Metromont Corporation	Mfg- Precast concrete materials	\$8,800,000	100	E
10-25	Blue Eye Soft Corporation	Office – IT solutions, service and staffing	\$500,000	120	E
11-7	Mapal, Inc	Mfg – Custom tooling	\$4,000,000	16	E
11-8	Vetroresina	Mfg – Fiber-reinforced polyester laminates	\$7,500,000	17	E
12-8	Lockheed Martin	Mfg – F-16 Jets	\$13,500,000	200	E
Announced Investment and Jobs			224,500,000	1,729	
Confidential Investment and Jobs			\$111,468,251	60	
Total Investment and Jobs			\$335,968,251	1,789	
Source: Greenville Area Development Corporation, revised January 3, 2017					

N= New company to Greenville; E= Expansion of existing Greenville County Company; INR= Information not released

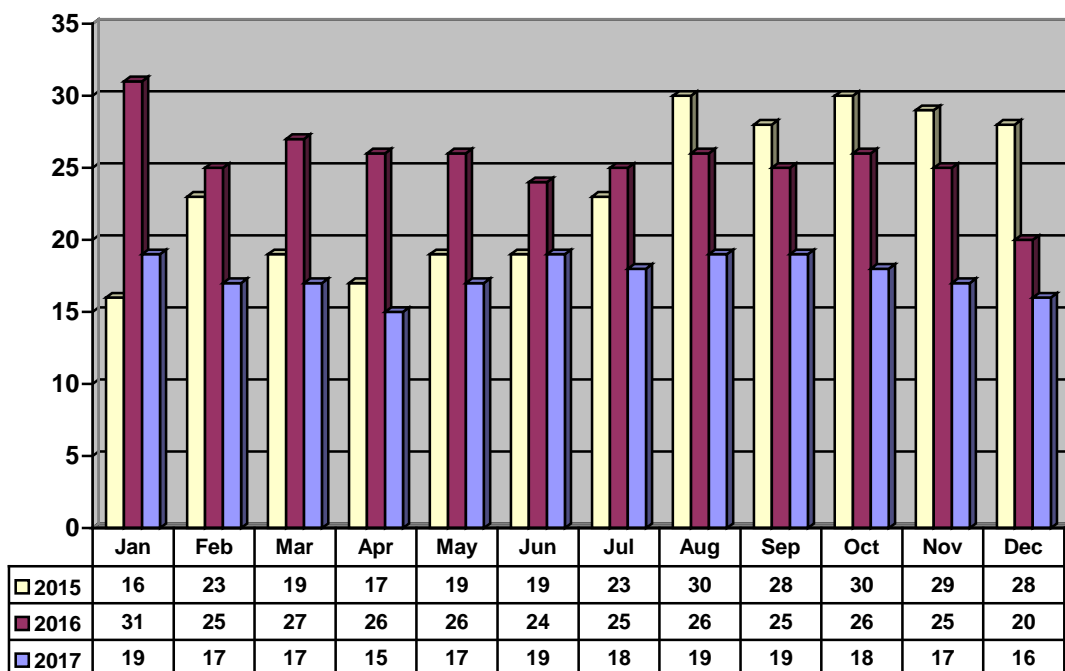
**GADC New Contacts
2015 thru 4th Quarter 2017**

Source: GADC



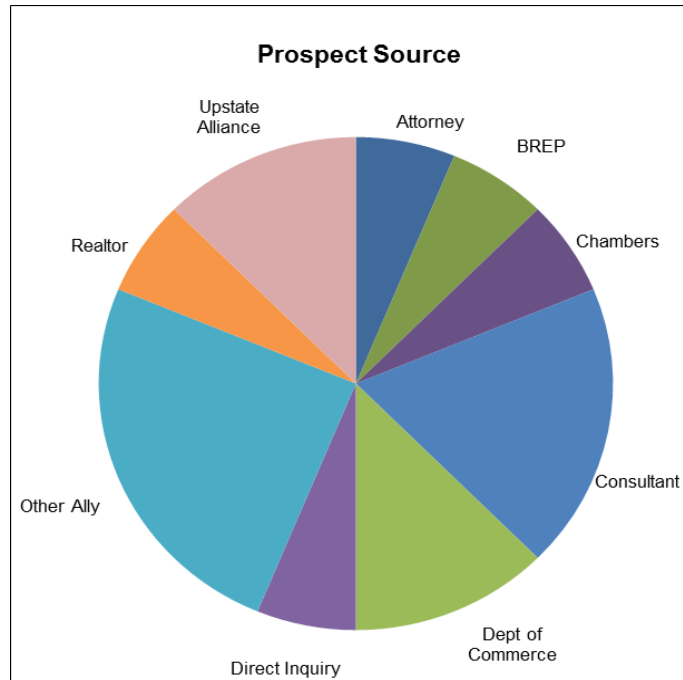
**GADC Prospect Activity
2015 thru 3rd Quarter 2017**

Source: GADC



**GADC Project Source
 December 2017**

Source: GADC



**GADC Prospects by Business Type
 December 2017**

Source: GADC

