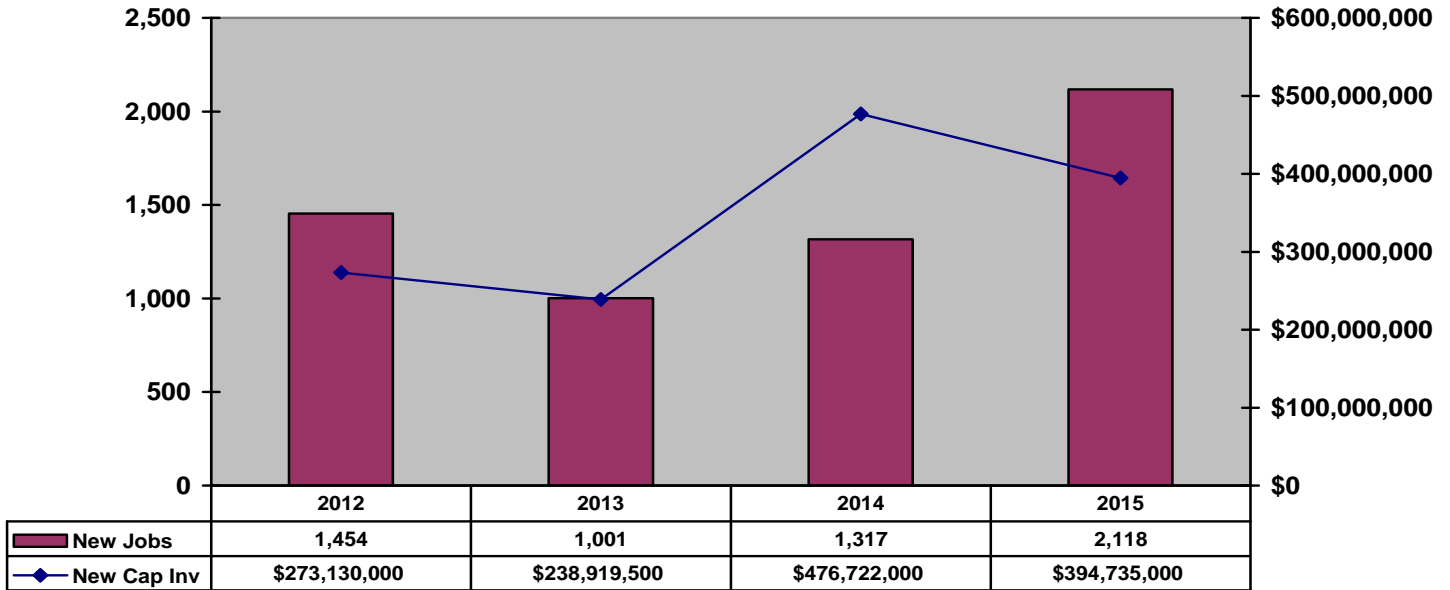


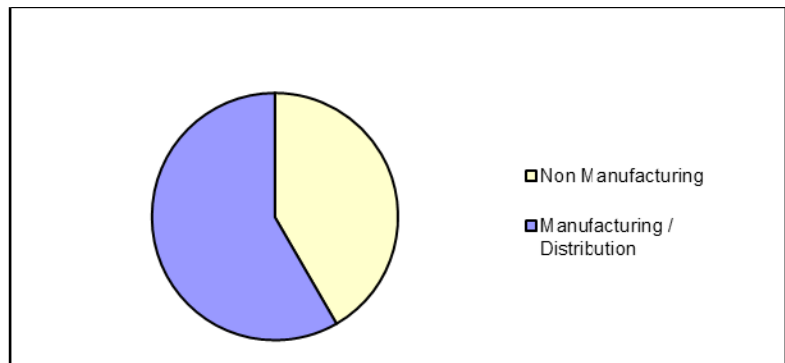
Announced New Job Creation and Capital Investment 2012-2015

Source: GADC

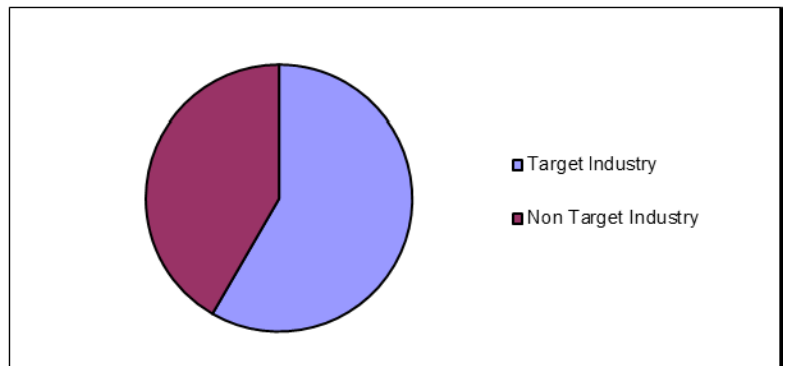


2015 Success by Type

Non Manufacturing	10
Manufacturing / Distribution	14
Total	24



Target Industry	14
Non Target Industry	10
Total	24



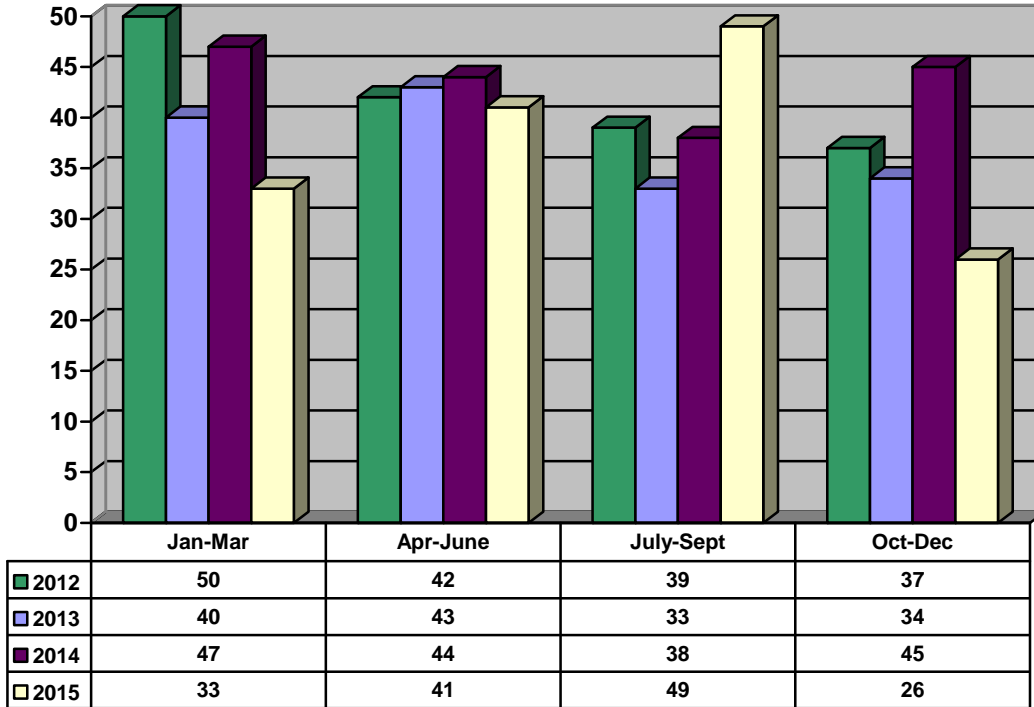
**2015 Announced Capital Investment and Job Creation
Greenville County, South Carolina**

Date	Company	Product	Investment	Jobs	Type
3-31	O'Neal Engineering	Office – Engineering	\$5,000,000	60	Exp
4-15	Erwin Penland	Office - Advertising	INR	INR	Exp
4-16	SYNNEX	Office / Distribution – IT Products	\$6,885,000	150	Exp
5-20	CareCam Health Systems	Office – Customer Care Center	\$50,000	60	New
5-28	Utility Partners	Office – Customer Care Center	\$4,200,000	426	Exp
6-1	MarleyLily	Mfg – Ecommerce	\$10,000,000	69	Exp
6-16	Associated Packaging	Mfg - Corrugated Containers	\$8,700,000	125	Exp
6-17	Pantex Americas, Inc.	Mfg – Hygiene Materials	\$10,400,000	45	New
7-8	Cott Beverages	Mfg - Beverages	\$10,000,000	0	Exp
7-21	CH2M	Office - Engineering	\$11,000,000	50	New
9-10	Aran Packaging	Mfg – Packaging	\$5,200,000	63	New
9-14	Kirchner Design, Inc.	Office – Planning, design, simulation and commissioning of equipment	\$1,000,000	30	New
9-23	Cold Mountain Material Corp	Mfg – Fabrics for automotive industry	\$24,000,000	109	New
9-28	Mitsubishi Polyester Film	Mfg - Polyester film	\$100,000,000	0	Exp
10-14	Magna International	Mfg – Automotive body panels	\$50,800,000	153	Exp
10-15	Bausch & Lomb	Mfg – Contact lens solution	\$30,000,000	36	Exp
10-26	ScanSource Inc.	Office – Specialty technology products	\$6,000,000	100	Exp
10-27	Sutera USA, LLC	Mfg – Waste and recycling collection systems	\$2,000,000	20	New
11-9	JTEKT North America	Office - Operational HQ at CU-ICAR	\$1,750,000	27	Exp
11-12	WYNIT Distribution, LLC	Office- Corporate HQ	INR	111	New
12-3	Earth's Creation USA	Mfg – Nutritional supplements	\$2,850,000	44	New
12-10	Sage Automotive	Mfg – Automotive cloth	\$5,000,000	0	Exp
Announced Investment and Jobs			\$294,835,000	1,678	
Confidential Investment and Jobs			\$99,900,000	440	
Total Investment and jobs			\$394,735,000	2,118	
Source: Greenville Area Development Corporation, revised January 6, 2016					

N= New company to Greenville; E= Expansion of existing Greenville County Company; INR= Information not released

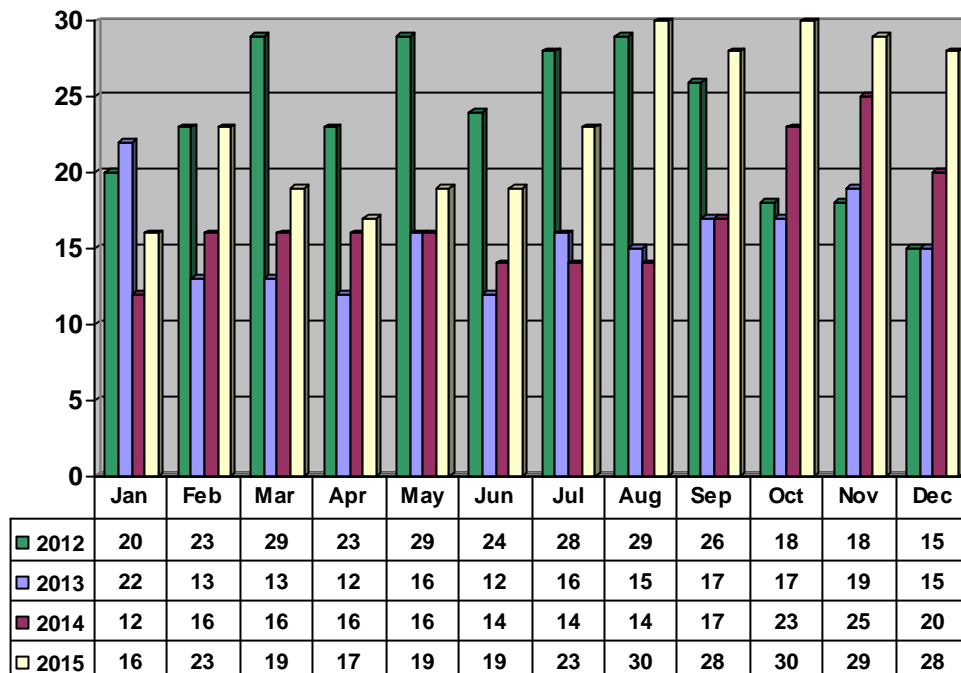
GADC New Contacts 2012-2015

Source: GADC



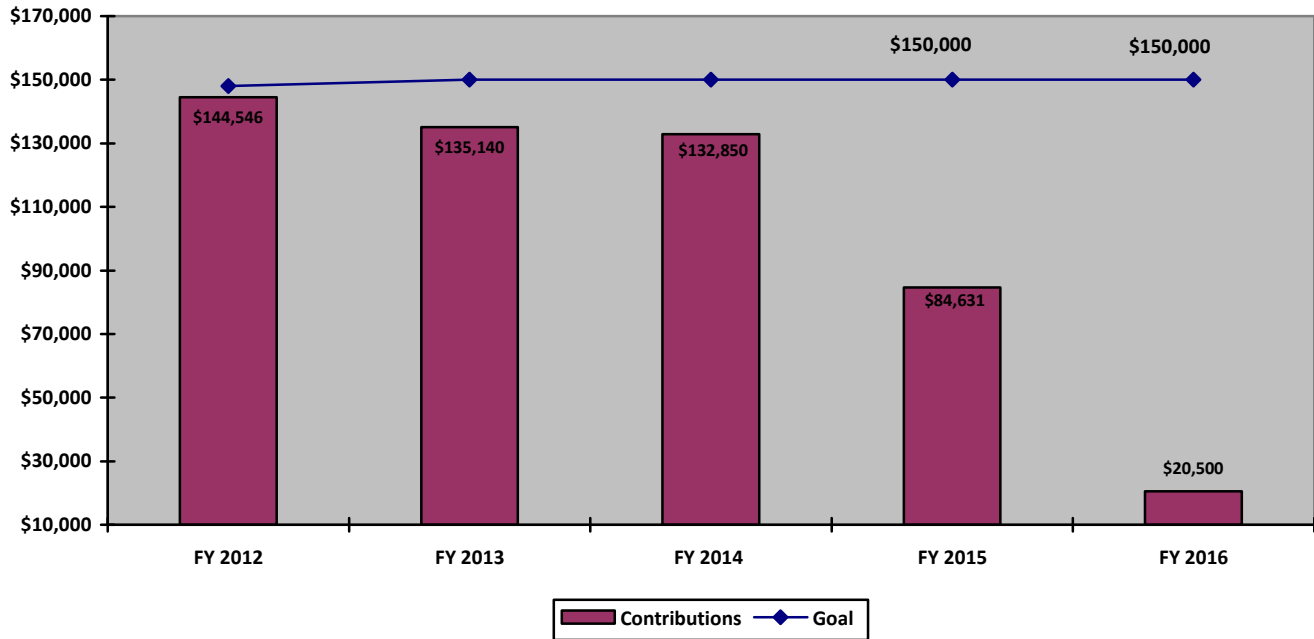
GADC Prospect Activity 2012-2015

Source: GADC



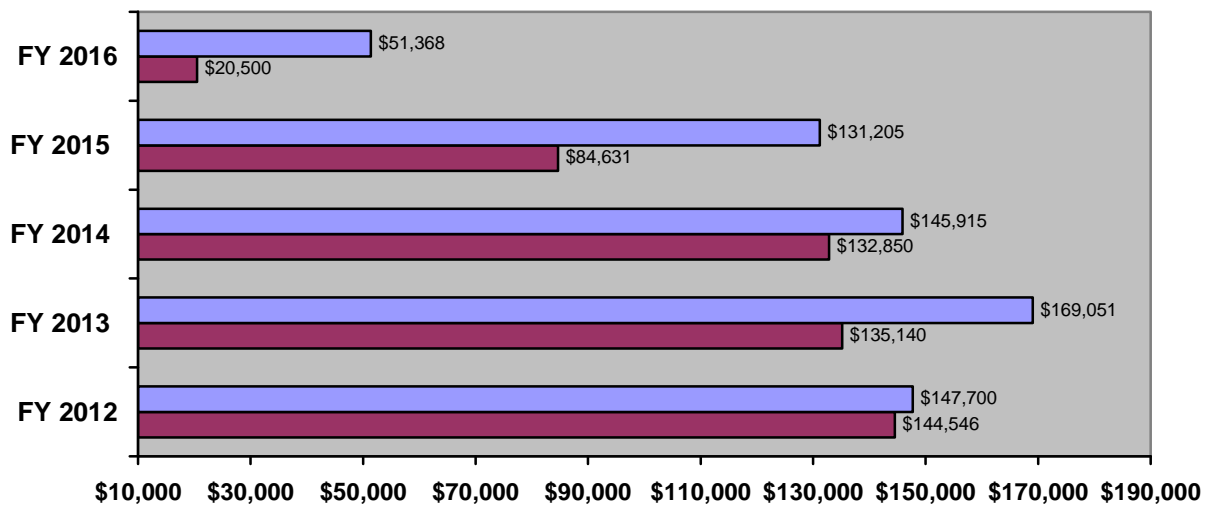
GADC Partner Support FY 2016 YTD (thru December 2015)

Source: GADC



GADC Marketing Budget FY 2016 YTD (thru December 2015)

Source: GADC



	FY 2012	FY 2013	FY 2014	FY 2015	FY 2016
Expenses	\$147,700	\$169,051	\$145,915	\$131,205	\$51,368
Partner Support	\$144,546	\$135,140	\$132,850	\$84,631	\$20,500