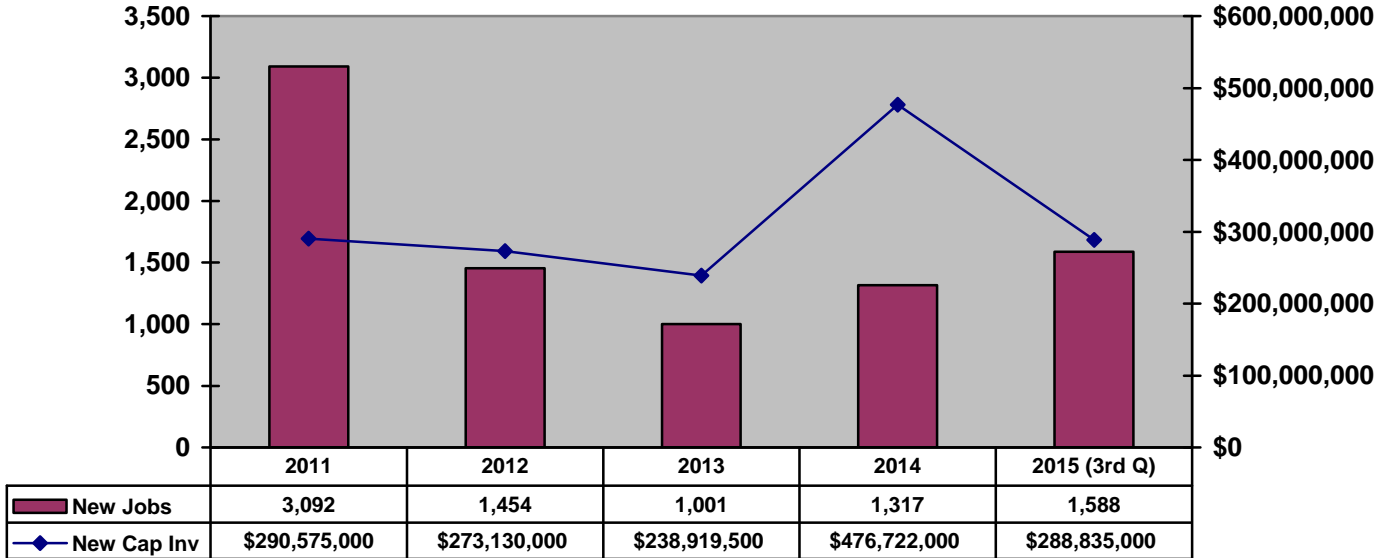


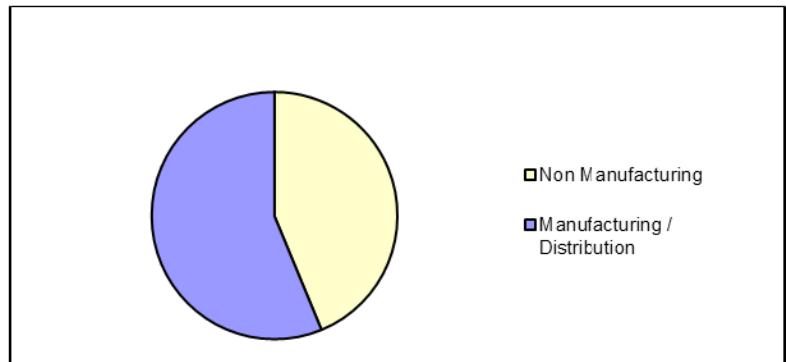
Announced New Job Creation and Capital Investment 2011-2015 (3rd Quarter)

Source: GADC

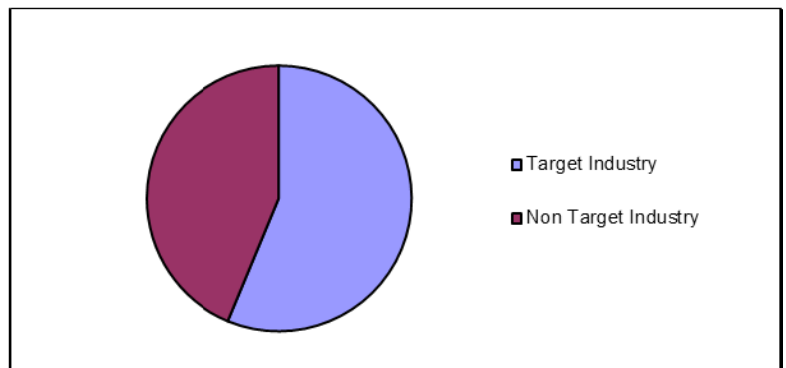


2015 Success by Type

Non Manufacturing	7
Manufacturing / Distribution	9
Total	16



Target Industry	9
Non Target Industry	7
Total	16



**Announced Capital Investment and Job Creation, thru 3rd Quarter 2015
Greenville County, South Carolina**

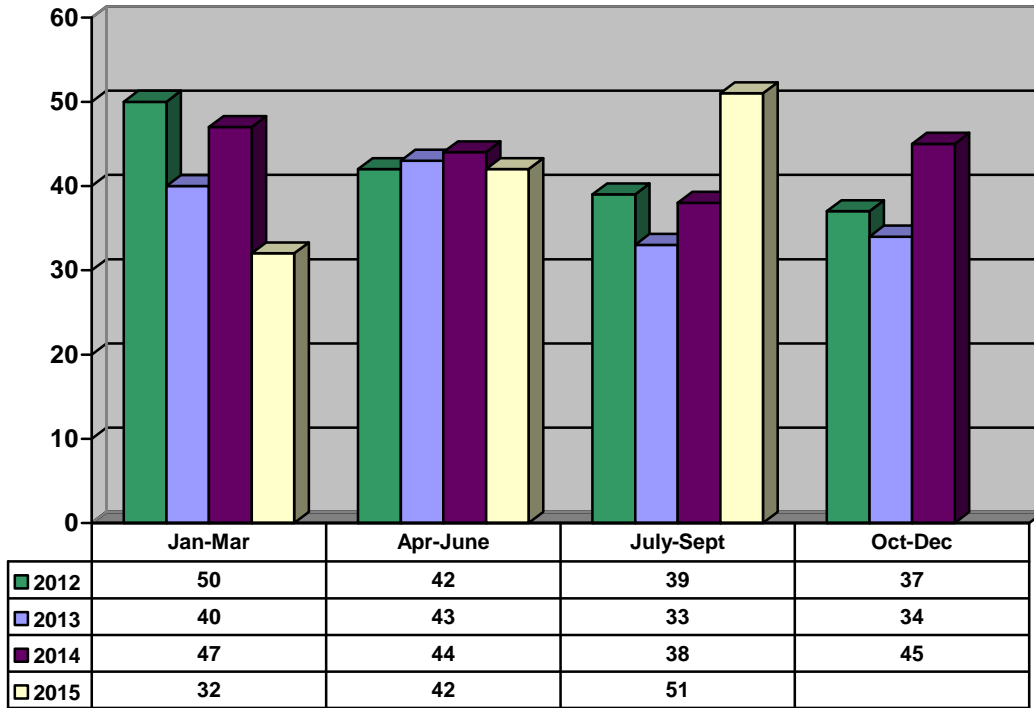
Date	Company	Product	Investment	Jobs	Type
3-31	O'Neal Engineering	Office - Engineering	\$5,000,000	60	E
4-15	Synexx	Office – HQ / IT	\$6,885,000	150	E
4-16	Erwin Penland	Office – Advertising	INR	INR	E
5-20	CareCam Health	Office - Customer Care Center	\$50,000	60	N
5-28	Utility Partners of America	Office – Customer Care Center	\$4,200,000	426	E
6-1	Marly Lilly	Distribution - ECommerce	\$10,000,000	69	E
6-16	Associated Packaging	Mfg – Corrugated Containers	\$8,700,000	125	E
6-17	Pantex International	Mfg – Hygiene Products	\$10,400,000	45	N
7-8	Cott Beverages	Mfg - Beverages	\$10,000,000	0	Exp
7-21	CH2M	Office - Engineering	\$11,000,000	50	New
9-10	Aran Packaging	Mfg – Packaging	\$5,200,000	63	New
9-14	Kirchner Design, Inc.	Office – Planning, design, simulation and commissioning of equipment	\$1,000,000	30	New
9-23	Cold Mountain Material Corp	Mfg – Fabrics for automotive industry	\$24,000,000	109	New
9-28	Mitsubishi Polyester Film	Mfg - Polyester film	\$100,000,000	0	Exp
Announced Capital Investment and New Jobs			\$196,435,000	1,187	
Confidential Capital Investment and New Jobs			\$92,400,000	401	
Total Capital Investment and New Jobs			\$288,835,000	1,588	

Source: Greenville Area Development Corporation, October 1, 2015

N= New company to Greenville; E= Expansion of existing Greenville County Company; INR= Information not released

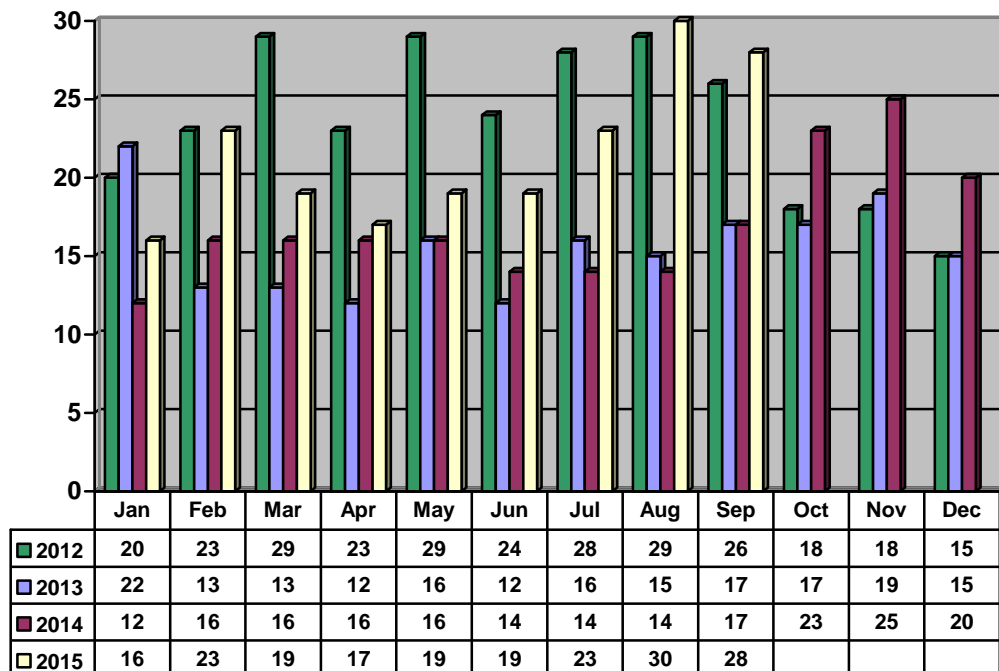
GADC New Contacts 2012-2015, thru 3rd Quarter

Source: GADC



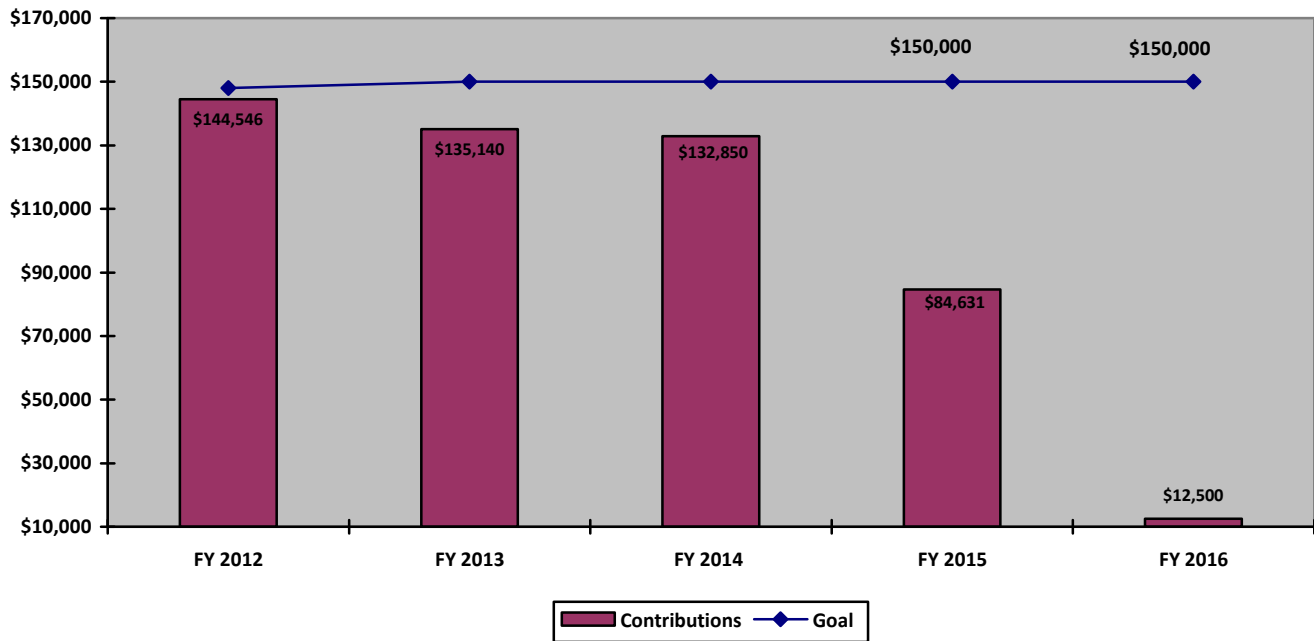
GADC Prospect Activity 2011-2015, thru 3rd Quarter

Source: GADC



**GADC Partner Support
FY 2012 - FY 2016 YTD**

Source: GADC



**GADC Marketing Budget
FY 2012 – FY 2016 YTD**

Source: GADC

