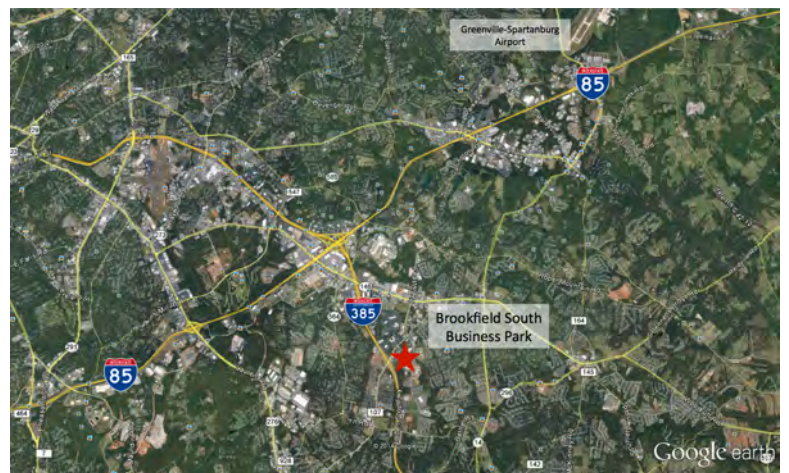


Brookfield South Business Park | 45 Brookfield Oaks Drive, Suite 600, Greenville, SC



BUILDING FEATURES

- 24,000 total SF
- 2,725 office SF
- 24' clear height
- 2 dock doors (9' x 10') with three knock-out panels
- 1 drive-in door (12' x 14')
- ESFR sprinkler system
- 50' x 40' column spacing
- 160' building depth
- Generous parking
- Located within 1 mile of I-385 and 2 miles of I-85



Brian Young | 864.370.8087 | brian.young@thalhimer.com
Elliott Fayssoux | 864.370.8190 | elliot.fayssoux@thalhimer.com
Kacie Jackson | 864.370.8193 | kacie.jackson@thalhimer.com

CUSHMAN & WAKEFIELD | THALHIMER



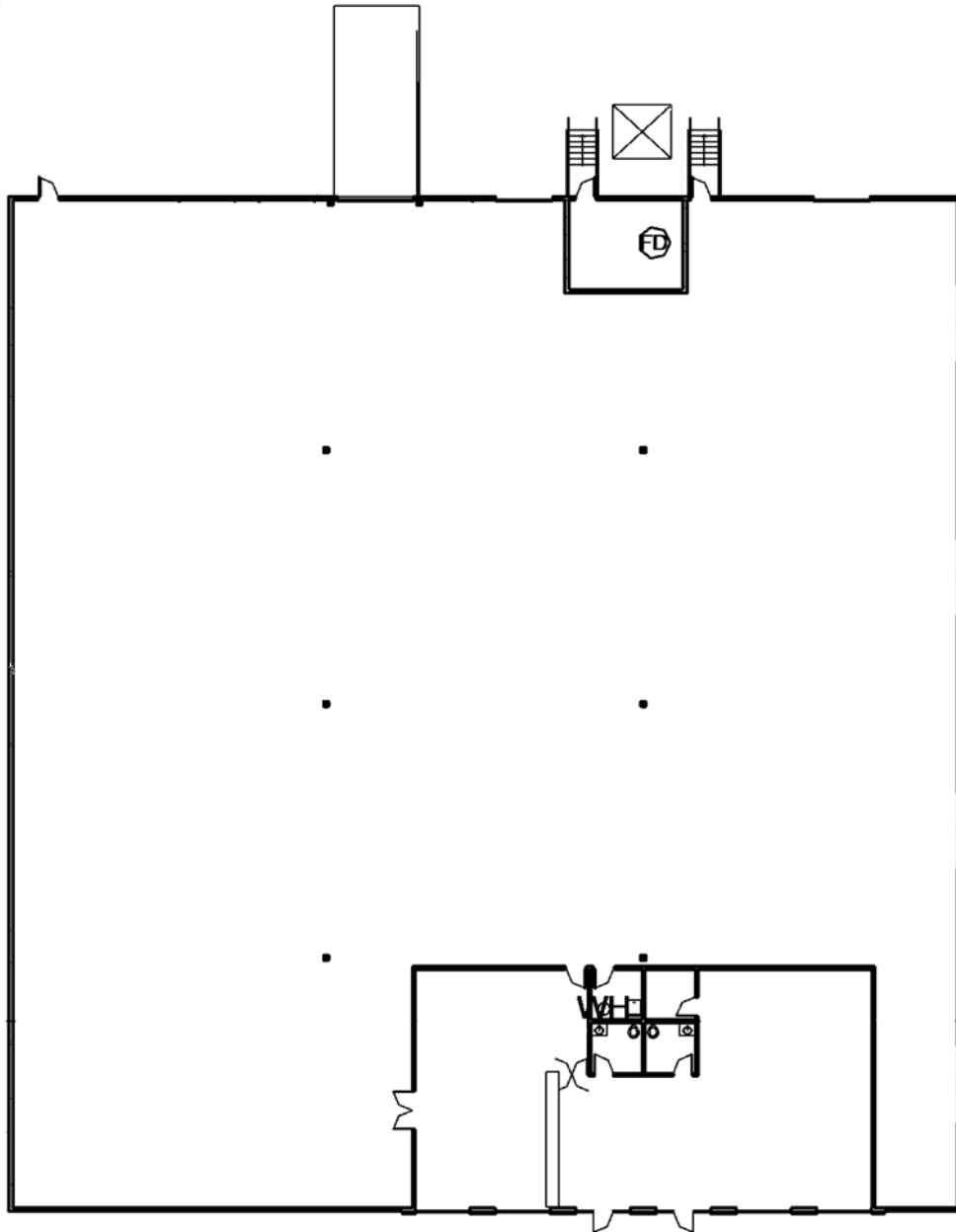


LIBERTY
PROPERTY
TRUST

FOR LEASE

24,000 SF

Brookfield South Business Park | 45 Brookfield Oaks Drive, Suite 600, Greenville, SC



Brian Young | 864.370.8087 | brian.young@thalhimer.com
Elliott Fayssoux | 864.370.8190 | elliott.fayssoux@thalhimer.com
Kacie Jackson | 864.370.8193 | kacie.jackson@thalhimer.com

CUSHMAN & WAKEFIELD | THALHIMER



1900 South Boulevard, Suite 302, Charlotte, NC 28203 | 704.426.8000 | libertyproperty.com