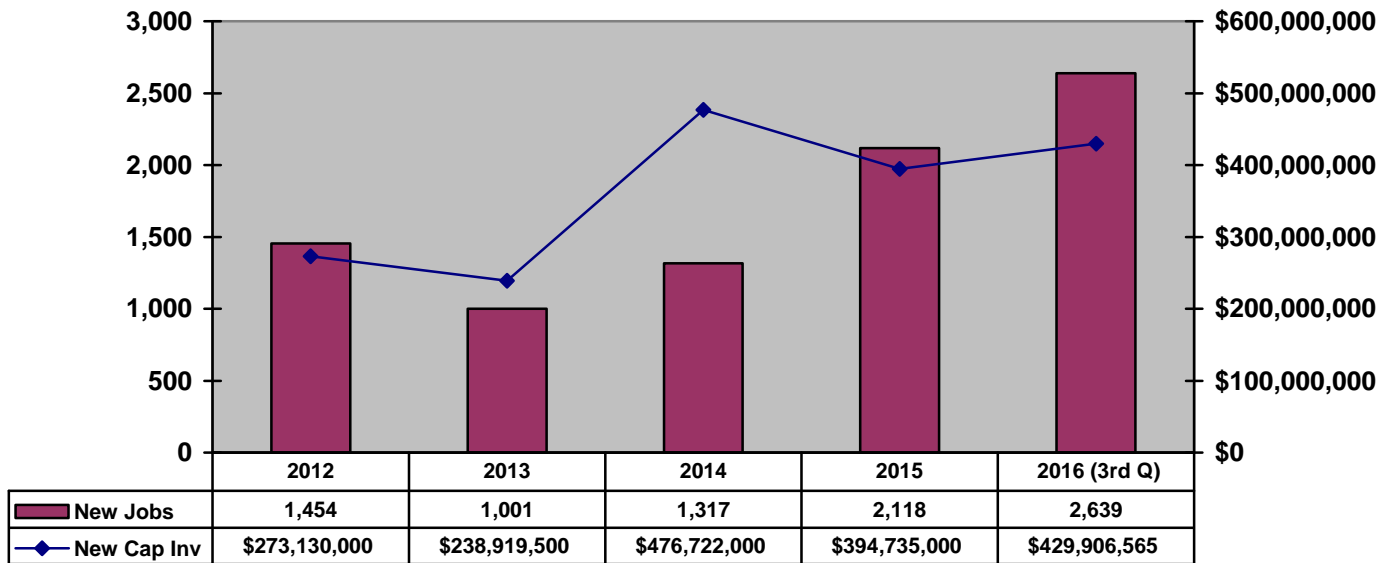
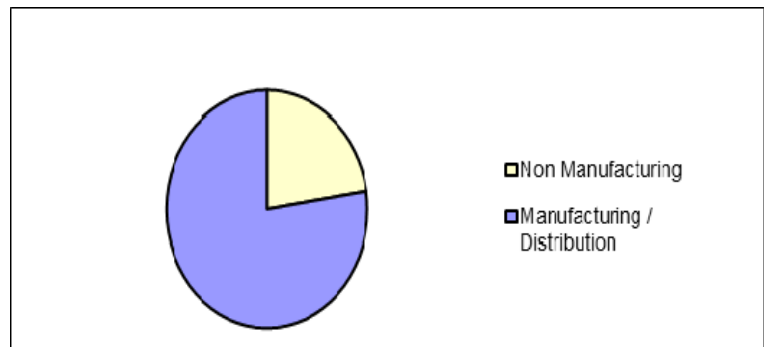


### Announced New Job Creation and Capital Investment 2012 to 2016

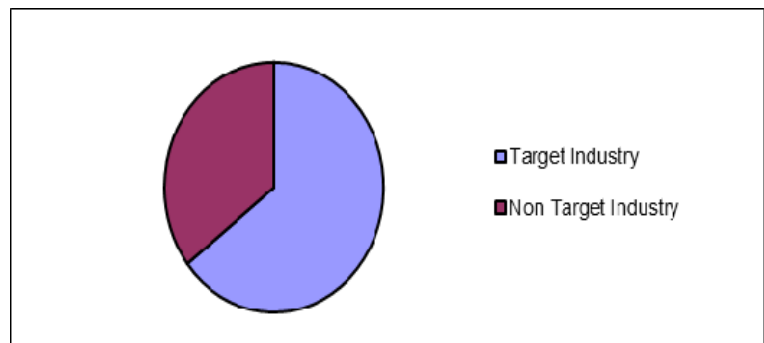
Source: GADC



Non Manufacturing	7
Manufacturing / Distribution	24
<b>Total</b>	<b>31</b>



Target Industry	20
Non Target Industry	11
<b>Total</b>	<b>31</b>



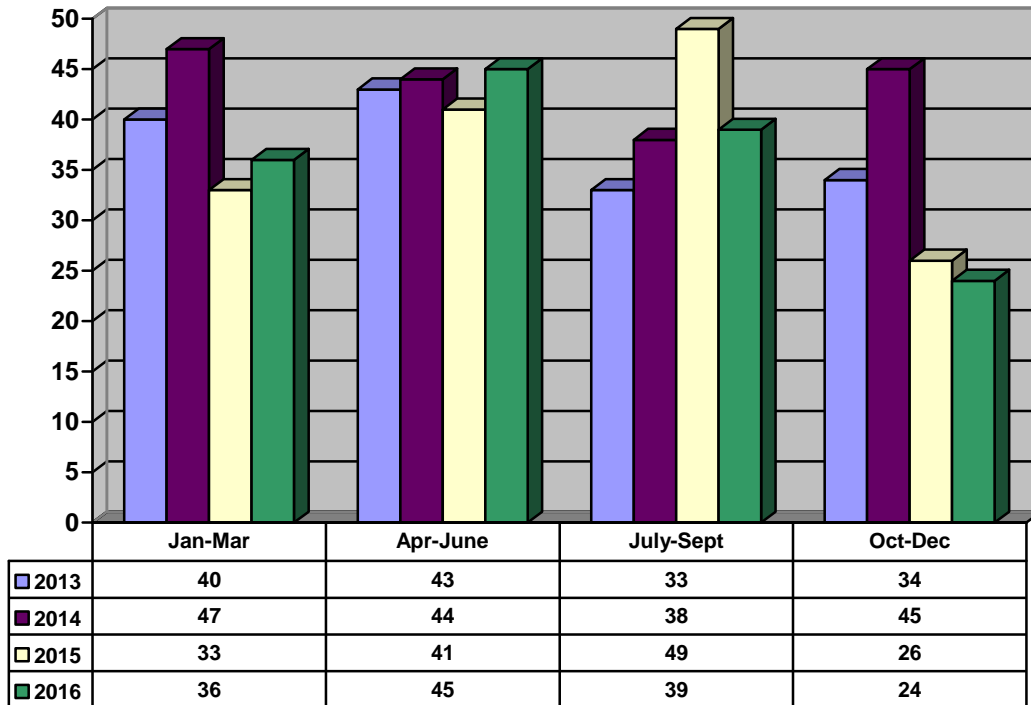
## 2016 Announced Capital Investment and Job Creation Greenville County, South Carolina

Date	Company	Product	Investment	Jobs	Type
2/1	Greenco Beverage Company	Distribution center	\$11,800,000	42	E
2/11	Bosch Rexroth	Mfg - Equipment testing area	\$5,800,000	0	E
2/18	Sun City Produce	Distribution center	\$8,316,565	81	N
3/2	Proper Polymer	Mfg – Injection molded components	\$15,450,000	87	N
3/16	Fitesa Simpsonville	Mfg – Nonwoven fabric solutions	\$52,000,000	38	E
3/17	Ushers Machine & Tool Co	Mfg – Parts & services for the energy industry	\$12,500,000	50	E
3/21	Total Quality Logistics	Office – 3 <sup>rd</sup> party logistics provider	\$0	75	N
3/31	SterAssure Processing	Mfg – Medical waste containers	\$2,200,000	25	N
4/7	RMF	Electroplating, Electrocoating, and powder coating	\$16,000,000	40	E
4/21	Chartspan Medical Technologies	Office – Healthcare data	\$3,200,000	300	E
6/2	PA Solutions	Office – Automation engineering company	\$65,000	40	E
6/21	Borgeson Universal Company	Mfg – Steering joints	\$4,500,000	36	N
6/14	Lockheed Martin	MRO facility	\$8,000,000	0	E
7-12	Tower International	Mfg – Automotive components	\$75,000,000	140	
8-10	Morley	Office- Customer care center	\$1,700,000	270	N
8-24	Anyone Home, Inc.	Office – Customer care center	\$1,175,000	574	N
9-6	Meyer Tool, Inc.	Mfg – Precision components	\$6,000,000	57	E
9-15	Alfmeier Friedrichs & Rath	Mfg – Automotive components	\$5,800,000	50	E
9-26	UST Logistical Systems	Office – HQ 3 <sup>rd</sup> Party Logistics	\$1,600,000	50	N
9-27	Duke Food Productions	Office – HQ	INR	25	E
9-28	Ultra Fab	Design & Mfg – Weather seal products	\$2,000,000	34	E
11-17	Beringer Aero USA	Sales & Distribution – Aircraft wheels and braking systems	INR	3	N
11-30	Ashland Chemical	Mfg – Specialty chemicals	\$5,600,000	0	E
12-6	B&W Fiberglass, Inc.	Mfg- High-performance textiles / fibers	\$5,250,000	46	N
12-6	Sealed Air	Mfg – Food packaging	\$78,400,000	30	E
12-14	PL Developments	Mfg / Logistics – Consumer healthcare products	\$45,000,000	450	N
Announced Investment and Jobs			\$367,356,565	2,543	
Confidential Investment and jobs			\$58,550,000	96	
Total Investment and jobs			\$425,906,565	2,639	
Source: Greenville Area Development Corporation, as of December 28, 2016					

N= New company to Greenville; E= Expansion of existing Greenville County Company; INR= Information not released

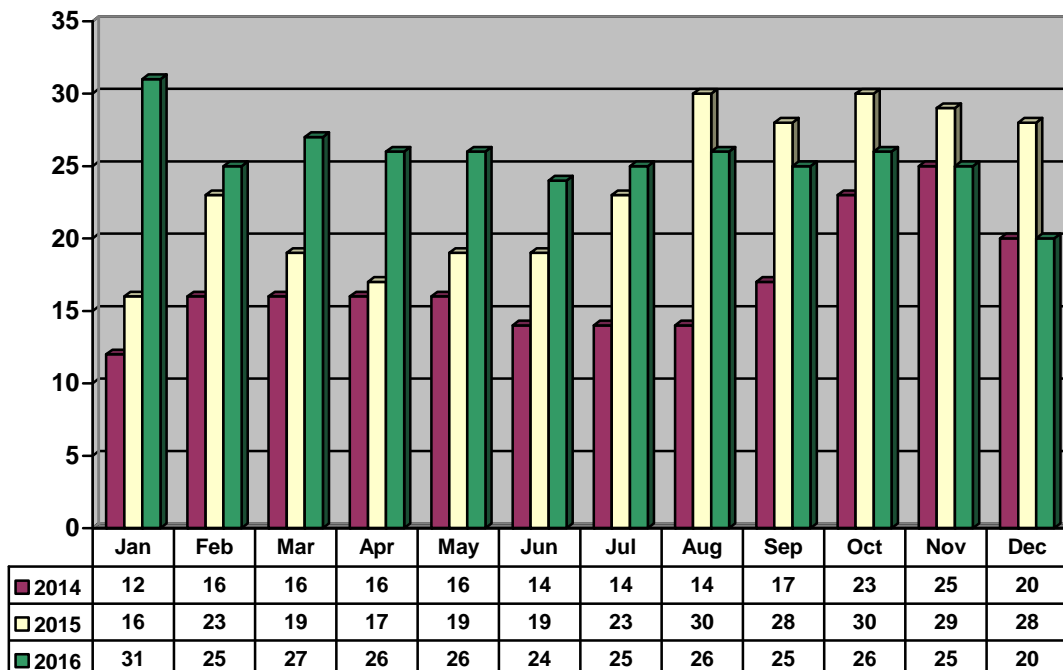
**GADC New Contacts  
 2013 to 2016**

Source: GADC



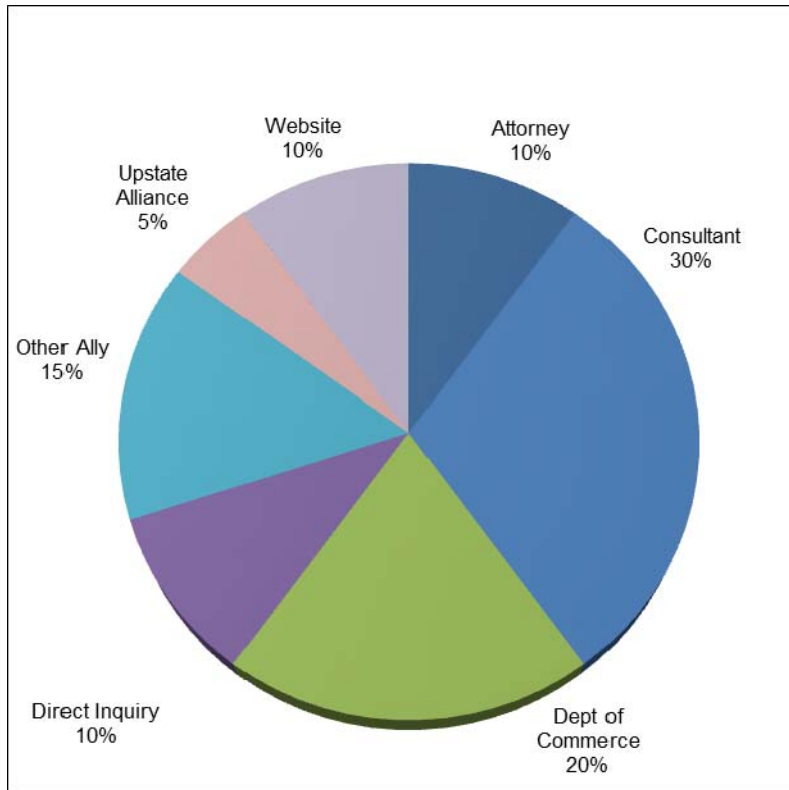
**GADC Prospect Activity  
 2014 to 2016**

Source: GADC



**Current Project Source  
December 2016**

Source: GADC



**Current Prospects by Business Type  
December 2016**

Source: GADC

