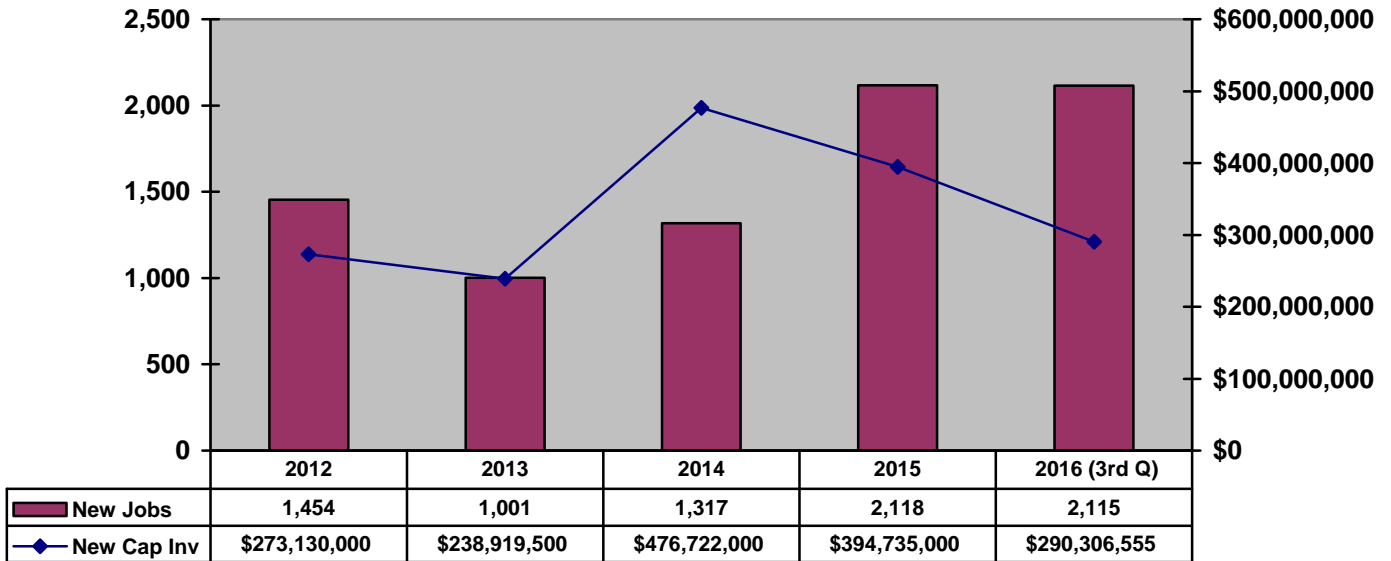


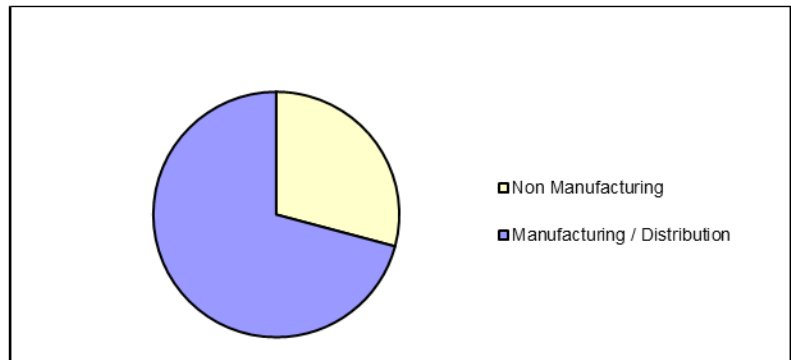
Announced New Job Creation and Capital Investment 2012 to 2016 (3rd quarter)

Source: GADC

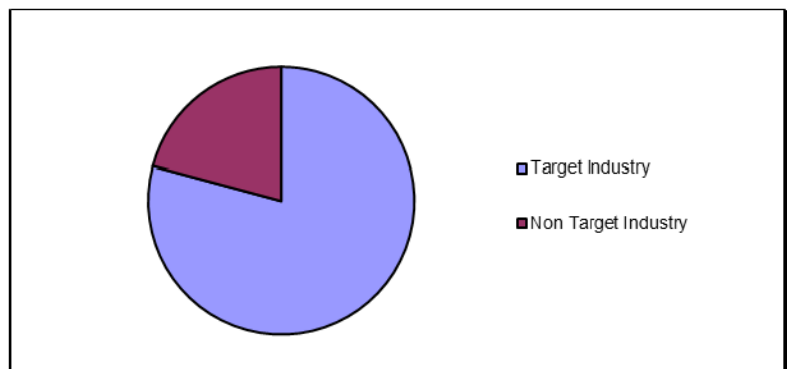


2016 Success by Type

Non Manufacturing	7
Manufacturing / Distribution	17
Total	24



Target Industry	19
Non Target Industry	5
Total	24



2016 Announced Capital Investment and Job Creation Greenville County, South Carolina

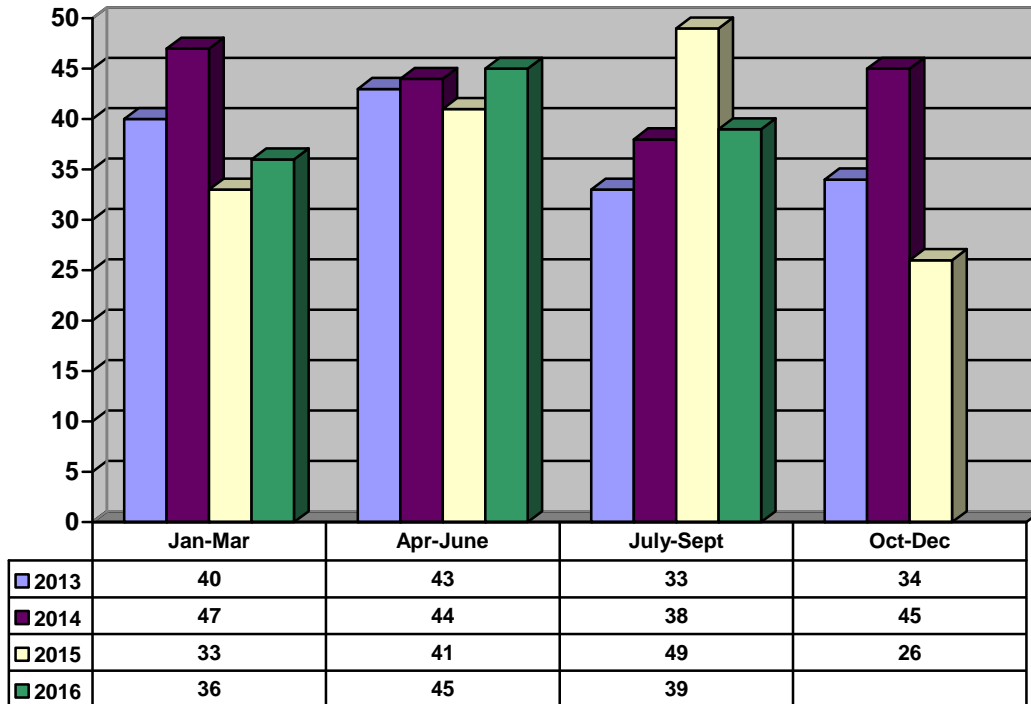
Date	Company	Product	Investment	Jobs	Type
2/1	Greenco Beverage Company	Distribution center	\$11,800,000	42	E
2/11	Bosch Rexroth	Mfg - Equipment testing area	\$5,800,000	0	E
2/18	Sun City Produce	Distribution center	\$8,316,565	81	N
3/2	Proper Polymer	Mfg – Injection molded components	\$15,450,000	87	N
3/16	Fitesa Simpsonville	Mfg – Nonwoven fabric solutions	\$52,000,000	38	E
3/17	Ushers Machine & Tool Co	Mfg – Parts & services for the energy industry	\$12,500,000	50	E
3/21	Total Quality Logistics	Office – 3 rd party logistics provider	\$0	75	N
3/31	SterAssure Processing	Mfg – Medical waste containers	\$2,200,000	25	N
4/7	RMF	Electroplating, Electrocoating, and powder coating	\$16,000,000	40	E
4/21	Chartspan Medical Technologies	Office – Healthcare data	\$3,200,000	300	E
6/2	PA Solutions	Office – Automation engineering company	\$65,000	40	E
6/21	Borgeson Universal Company	Mfg – Steering joints	\$4,500,000	36	N
6/14	Lockheed Martin	MRO facility	\$8,000,000	0	E
7-12	Tower International	Mfg – Automotive components	\$75,000,000	140	
8-10	Morley	Office- Customer care center	\$1,700,000	270	N
8-24	Anyone Home, Inc.	Office – Customer care center	\$1,175,000	574	N
9-6	Meyer Tool, Inc.	Mfg – Precision components	\$6,000,000	57	E
9-15	Alfmeier Friedrichs & Rath	Mfg – Automotive components	\$5,800,000	50	E
9-26	UST Logistical Systems	Office – HQ 3 rd Party Logistics	\$1,600,000	50	N
9-27	Duke Food Productions	Office – HQ	INR	25	E
9-28	Ultra Fab	Design & Mfg – Weather seal products	\$2,000,000	34	E
Announced Investment and Jobs			\$249,506,565	2,019	
Confidential Investment and jobs			\$40,800,000	96	
Total Investment and jobs			\$290,306,565	2,115	

Source: Greenville Area Development Corporation, as of September, 30, 2016

N= New company to Greenville; E= Expansion of existing Greenville County Company; INR= Information not released

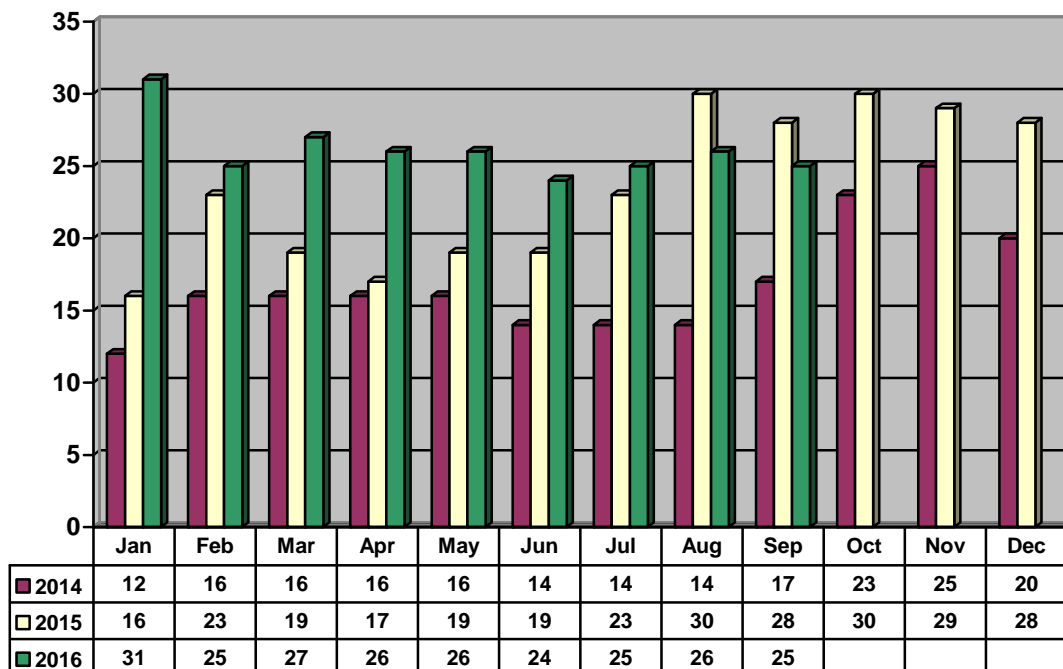
**GADC New Contacts
 2012 to 2016 (3rd Quarter)**

Source: GADC



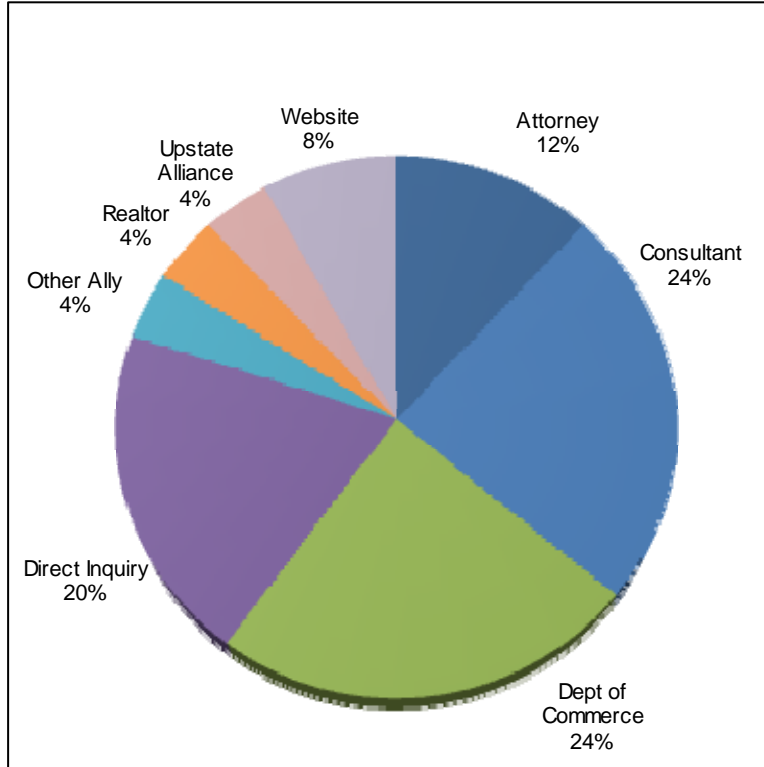
**GADC Prospect Activity
 2014 to 2016 (3rd Quarter)**

Source: GADC



**Source of Current Prospects
September 2016**

Source: GADC



**Current Prospects by Business Type
September 2016**

Source: GADC

