



# Available Industrial Site

## Antioch Industrial Park - Tract A

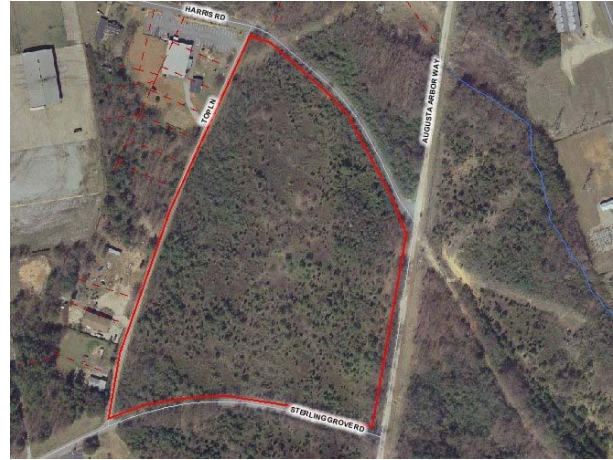
### 18 Acres

### Location

**LOCATION:** Augusta Arbor Way & Sterling Grove, W of US 25  
**COMMUNITY:** Greenville  
**COUNTY:** Greenville

### Description

**MINIMUM ACRES:** 18 Acres  
**MAXIMUM ACRES:** 18 Acres  
**SUBDIVIDE:** N Acres  
**CURRENT USE:** Vacant  
**SURROUNDING AREA:** Industrial / Service  
**TOPOGRAPHY:** Level



### Taxes and Zoning

**ZONED INDUSTRIAL:** Yes  
**RESTRICTIONS:** I-1, Industrial  
**TAXMAP:** 593.4-1-13  
**TAX DISTRICT:** 100  
**MILLAGE RATE:** 267.10 (2009)  
**FOREIGN TRADE ZONE:** No  
**FIRE DISTRICT:** South Greenville  
**FIRE RATING:** 5/9

### Transportation and Access

**INTERSTATE:** I-185 0.5 Miles  
**ALT. HIGHWAY:** US Hwy 25 0.1 Miles  
**PRIMARY AIRPORT:** GSP International Airport 15 Miles  
**CIVIL AIRPORT:** SC-TAC 0.5 Miles  
**PORT:** Charleston 207 Miles  
**RAIL:** None

### Utilities

**WATER:** Greenville Water System 16"  
 16" main 1,575' S of site; 8" line 250' W of site  
**GAS:** Piedmont Natural Gas 12"  
 12" line at site on Old Augusta Road  
**SEWER:** 8"  
 8" main 1,575' south of site  
**ELECTRICITY:** Duke Energy

### Sales

**MIN. PRICE ACRE:** \$50,000  
**MAX. PRICE PER ACRE:**  
**LEASE:**  
**SOURCE:** Dan Bruce  
 RealtiCorp LLC  
 864-271-4700

### Comments

Level site, located near Donaldson Center and the intersection of US Highway 25 and I-185 (Southern Connector). Conceptual site plan shows 157,250 SF of industrial space on site.

**For Additional Information Contact:**

Greenville Area Development Corporation  
 233 North Main, Suite 250  
 Greenville SC 29601

Phone: 864-235-2008  
 Fax: 864-235-9030  
 E-Mail: [jhoward@greenvillecounty.org](mailto:jhoward@greenvillecounty.org)



No warranty or representation, expressed or implied, is made regarding the accuracy of this data, and same is subject to omissions, errors, and changes. This report is in accordance with the terms and agreements of the InfoMentum License Agreement. This information was compiled by the SC Dept. of Commerce, the SC Appalachian Council of Governments and the Greenville Area Development Corporation

ID: S190G

LAST UPDATE: 3/27/2009

# Antioch Industrial Park - Tract A Location Map

