



Available Industrial Building

Steel Summit

60,000 Square Feet

LOCATION: 108 Progressive Court
COMMUNITY Greenville
COUNTY: Greenville
STATE: South Carolina



Description

BUILDING AREA 4,800 Office Square Feet
55,200 Mfg / Warehouse Square Feet
60,000 Total Square Feet

SITE: 13.4 Acres (Additional land available)
YEAR BUILT: 2001
CONDITION: Excellent
PREVIOUS USE: Steel slitting

CONSTRUCTION: Floor: Concrete
Walls: Metal (Insulated)
Columns: 90' Clear span
Roof: Metal (Insulated)

CLEAR HEIGHT: Eaves: 36.4' (33.4' under beam)
Center 40.1' (36.3' under beam)

SPRINKLER: Office
HEAT PORTION: 100%
AIR CONDITION.: Office only
LIGHTING: High intensity discharge
TRUCK DOCKS: 1 **DRIVE-IN DOORS:** 4

Taxes and Zoning

TAX DISTRICT: 151
MILLAGE RATE: 287.40 (2009)
FIRE DISTRICT: Gantt Fire District
FIRE RATING: 3
ZONING: I-1, Industrial

Sales

SALE PRICE: \$2,800,000
LEASE PRICE: For Sale Only
AVAILABLE: Immediately
CONTACT: Ford Borders / Grice Hunt
NAI Earle Furman
864-232-9040

Utilities

WATER: Greenville Water System 12"
GAS: Piedmont Natural Gas
SEWER: WCRSA 12"
ELECTRICITY Duke Energy

Transportation and Access

INTERSTATE ACCESS : I-85 2.1 Miles
ALTERNATE HIGHWAY: US 25 1.25 Miles
COMMERCIAL AIRPORT GSP International 14.5 Miles
CIVIL AIRPORT: Donaldson Center 5.5 Miles
NEAREST PORT: Charleston 204 Miles
RAIL ACCESS: CSX
Spur inside / through building

Comments

This building includes a 40-ton crane and a 30-ton crane, each with an 80' span, 600' travel and 24' clear under the hook. Building is expandable.

For Additional Information Contact:

Greenville Area Development Corporation
233 North Main, Suite 250
Greenville, SC 29601

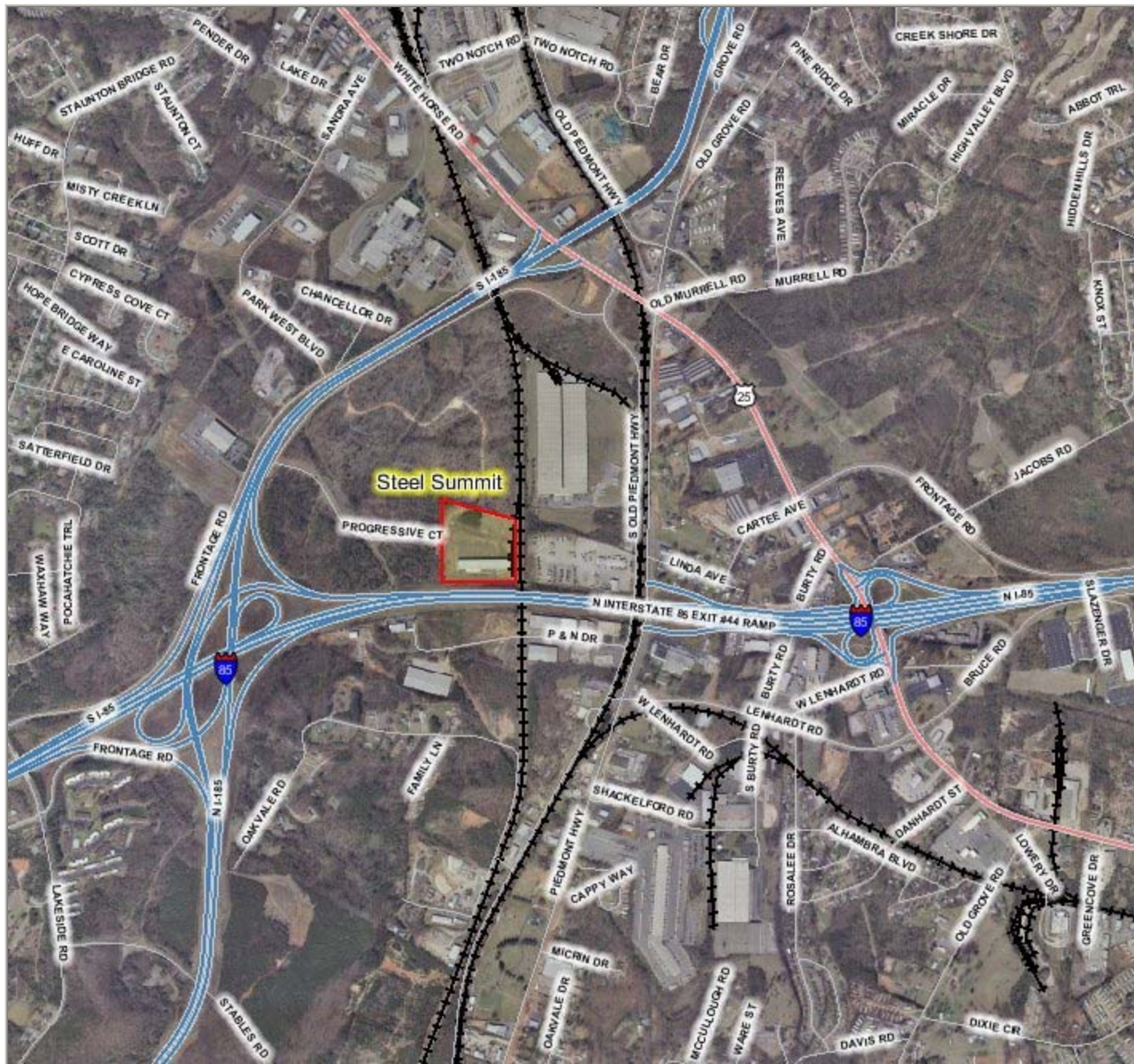
Phone: 864-235-2008
Fax: 864-235-9030
E-Mail: jhoward@greenvillecounty.org



No warranty or representation, expressed or implied, is made regarding the accuracy of this data, and same is subject to omissions, errors, and changes. This report is in accordance with the terms and agreements of the InfoMentum License Agreement. This information was compiled by the SC Dept. of Commerce, the SC Appalachian Council of Governments and the Greenville Area Development Corporation

ID: B304G

LAST UPDATE: 6/18/2008



Steel Summit Building Location

Map Scale
1 inch = 1600 feet

Disclaimer: This map is not a LAND SURVEY and is for reference purposes only. Data contained in this map are prepared for the inventory of Real Property found within this jurisdiction, and are compiled from recorded deeds, plats, and other public records. Users of this map are hereby notified aforementioned public primary information sources should be consulted for verification of the information contained in this map. Greenville County assumes no legal responsibility for the information contained in this map.