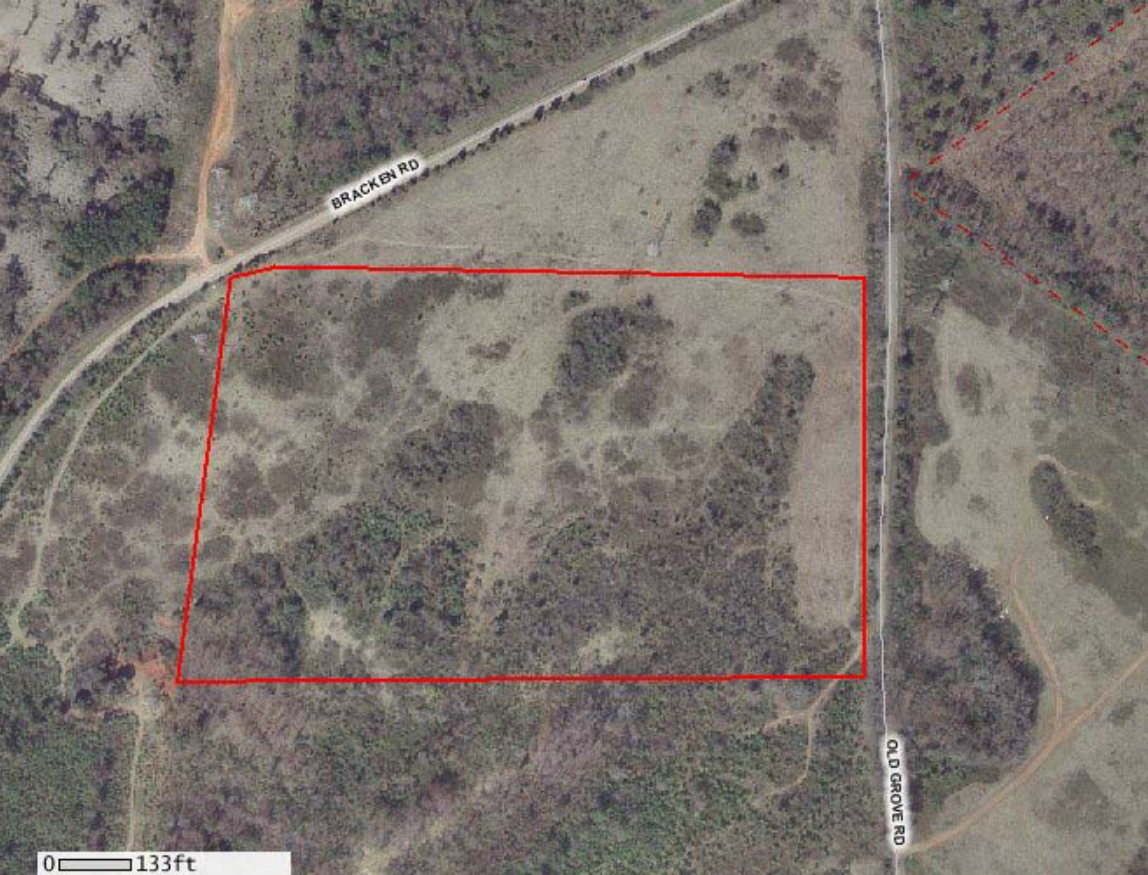


**Matrix Park – Lot 18**  
**Old Grove Road**



**MATRIX  
SPEC #3**

**SUBSTATION**

**BRACKEN ROAD**

**LOT #18  
(±25.1 Ac.)**

**GORDON  
FOODS**

**OLD GROVE ROAD**

PROPOSED  
PROPERTY LINE

DUKE POWER  
R/W LINE (TYP)

SCDOT R/W  
LINE (TYP)

DUKE POWER  
R/W LINE (TYP)

SCDOT R/W  
LINE (TYP)

PROPOSED  
PROPERTY LINE

JURISDICTIONAL  
WETLANDS  
BOUNDARY

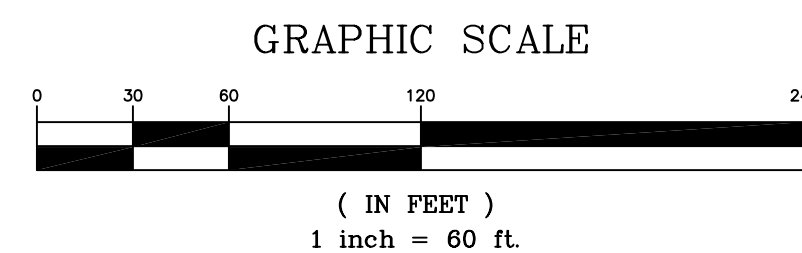
NOTICE  
THIS DRAWING IS THE PROPERTY OF  
H2L CONSULTING ENGINEERS AND IS  
FURNISHED WITH THE CONDITION THAT  
IT IS NOT TO BE CHANGED WITHOUT  
WRITTEN AUTHORIZATION OF H2L.  
FURTHERMORE, THIS DRAWING IS NOT  
TO BE COPIED, REPRODUCED OR USED  
BY OTHERS EXCEPT AS REQUIRED FOR  
THE WORK OF THIS SPECIFIC PROJECT.  
© 2002 H2L

**H2L**  
CONSULTING ENGINEERS

122 EDGEWORTH STREET  
GREENVILLE, SOUTH CAROLINA 29607  
(864) 233-8844 FAX: 232-2679



A	PRELIMINARY FOR INTERNAL USE ONLY	08/22/07	ELH	
No.	Release	Date	By	



**MATRIX LOT #18**

**GIS TOPOGRAPHY**

Date: 08/22/07 Approved By: ELH

Drawn By: ELH Checked By: WBS

Project No: 2007-999

**C-1**