

FOR LEASE

DOWNTOWN OFFICE SPACE

FLOOR/AREA: Up to 20,000 SF Lobby Level Space
Available with Signage

1,000 to 11,000 SF Office Space
Available

LOCATION: Downtown Greenville

LEASE PRICE: \$16.50 PSF – Tower Floors
\$19.50 PSF – Lobby Space

301

**NORTH MAIN
LANDMARK BLDG
SITE #8023**

GREENVILLE, SC



FOR MORE INFORMATION CONTACT:

Stephen B. Smith, SIOR

Office Services
864.527.6030 Direct
steve.b.smith@cbre.com

Blaine M. Hart

Office Services
864.527.6054 Direct
blaine.hart@cbre.com

CBRE | The Furman Co.
CB RICHARD ELLIS

FOR
LEASE

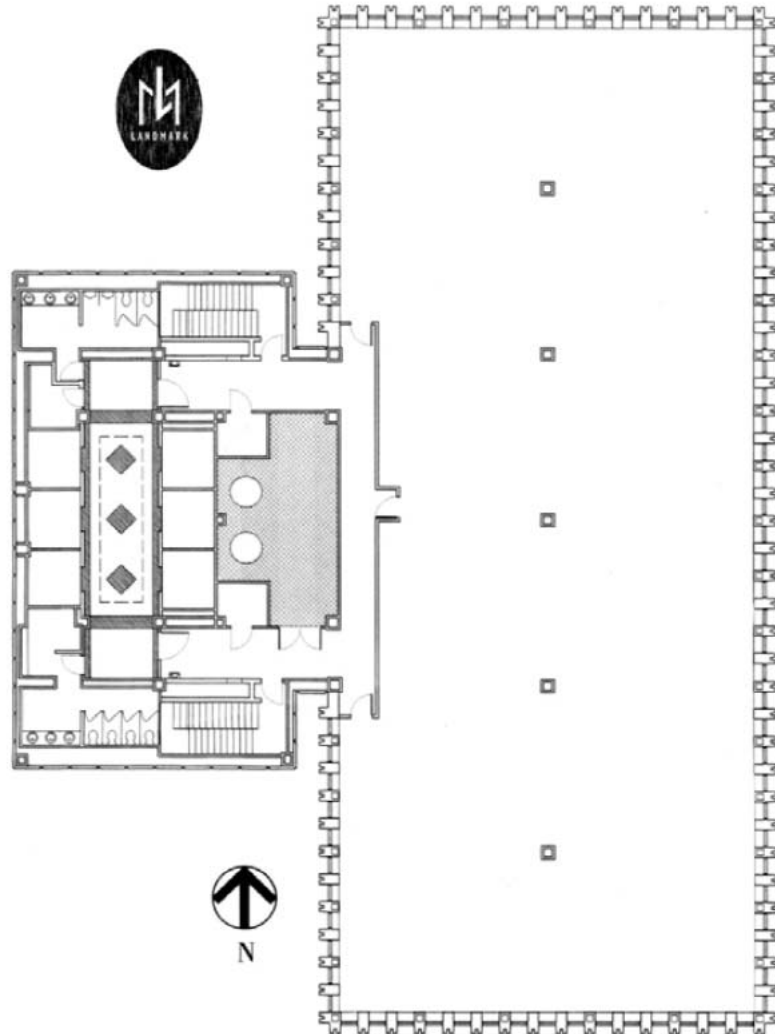


301 NORTH MAIN LANDMARK BLDG SITE #8023 GREENVILLE, SC

SPACE FEATURES

- :: Small Office Suites Available on 10th and 11th Floors from 1,000 to 1,800 SF with Common Breakroom and Conference Room
- :: Newly Renovated
- :: Parking Available
- :: Prominent Downtown Greenville Location with Easy Access to Restaurants and Retailers

TYPICAL FLOOR PLAN



FOR MORE INFORMATION PLEASE CONTACT

Stephen B. Smith, SIOR

Office Services
864.527.6030 Direct
steve.b.smith@cbre.com

Blaine M. Hart

Office Services
864.527.6054 Direct
blaine.hart@cbre.com

CBRE|The Furman Co. | 101 N. Main Street | Suite 1400 | Greenville, SC 29601 | www.cbre.com/greenville

© 2010 CB Richard Ellis, Inc. This information has been obtained from sources believed reliable. We have not verified it and make no guarantee, warranty or representation about it. Any projections, opinions, assumptions or estimates used are for example only and do not represent the current or future performance of the property. You and your advisors should conduct a careful, independent investigation of the property to determine to your satisfaction the suitability of the property for your needs.

CBRE | The Furman Co.
CB RICHARD ELLIS