



Contact Information

For additional information on this space, contact:

Coldwell Banker Commercial Caine
200 East Broad Street, Suite 200
Greenville, SC 29601
(864) 250-2800 Business

Charles Humphreys, CCIM
(864) 250-6891
chumphreys@cbccaine.com



Brian Scurlock
(864) 250-6823
bscurlock@cbccaine.com



Nicholas Sardone, MRICS
(864) 250-6812
nsardone@cbccaine.com



50 Datastream Plaza
Greenville, SC 29605

Office Space for Sublease
30,000 Rentable Square Feet



Coldwell Banker Commercial Caine | www.cbccaine.com
GREENVILLE | 864.250.2800 | 800.432.0044 Toll Free
200 East Broad Street, Suite 200 | Greenville, SC 29601
SPARTANBURG | 864.585.8713 | 800.743.4420 Toll Free
901 South Pine Street | Spartanburg, SC 29502



Location

Close proximity to the intersection of I-85 and White Horse Road

Amenities

- 24 hour key card access
- 2 Passenger elevators, 1 freight elevator
- Auditorium, training and conference facilities available
- Parking ratio: 6.5/1,000 SF
- Interstate visibility
- Building signage available

Space

- 30,000 Rentable Square Feet (Entire Second Floor)
- Predominately open floor plan with exterior offices
- Subdividable:
 - Space 1: 5,860 RSF
 - Space 2: 5,975 RSF
 - Space 3: 6,680 RSF
 - Space 4: 3,165 RSF
 - Space 5: 3,713 RSF
- Lease term up to ten (10) years
- Existing cafeteria-ready space

Sublease Rate:

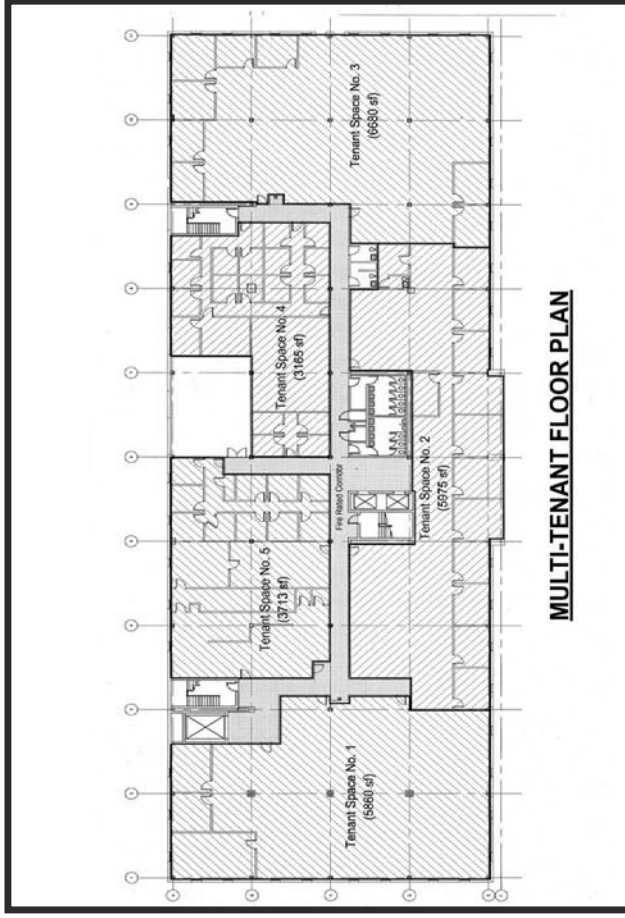
**\$14.50/SF Full Service
(Unfurnished)**



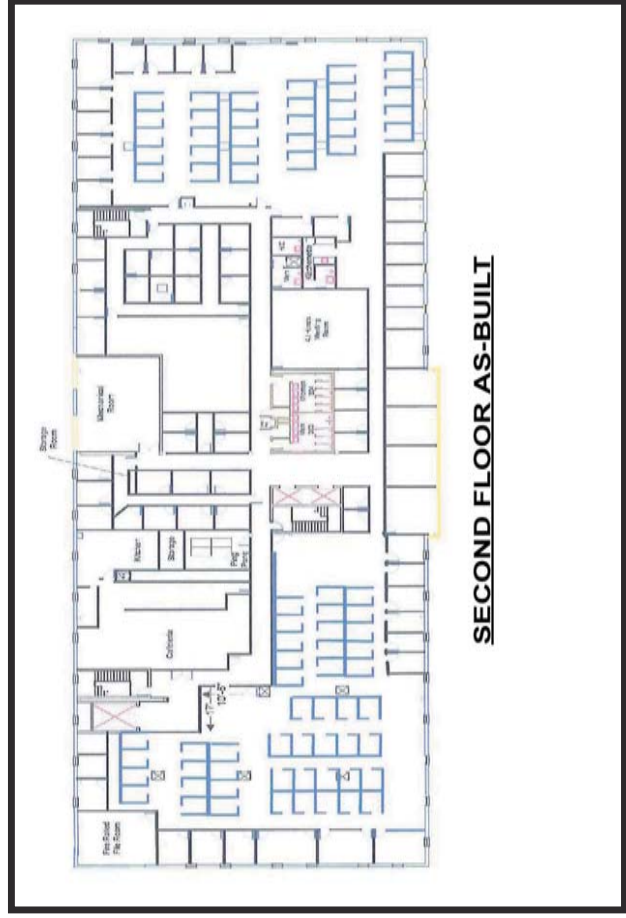
BUILDING SIGNAGE AVAILABLE



ABUNDANT ON-SITE PARKING



MULTI-TENANT FLOOR PLAN



SECOND FLOOR AS-BUILT