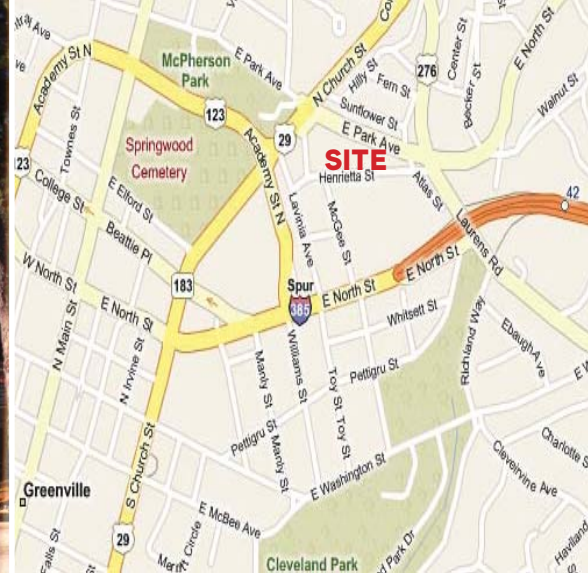


20,525 +/- SF FOR LEASE > OFFICE SPACE > DOWNTOWN



420 E. Park Avenue

GREENVILLE, SC 29601



420 East Park Avenue > Office Space

Located at the edge of Greenville's CBD, 420 East Park Avenue provides easy access to I-385, North Main Street, and Church Street. Surrounded by lush landscaping and fronted by a creek, the building offers a suburban feel and setting located in downtown Greenville.

Building Amenities

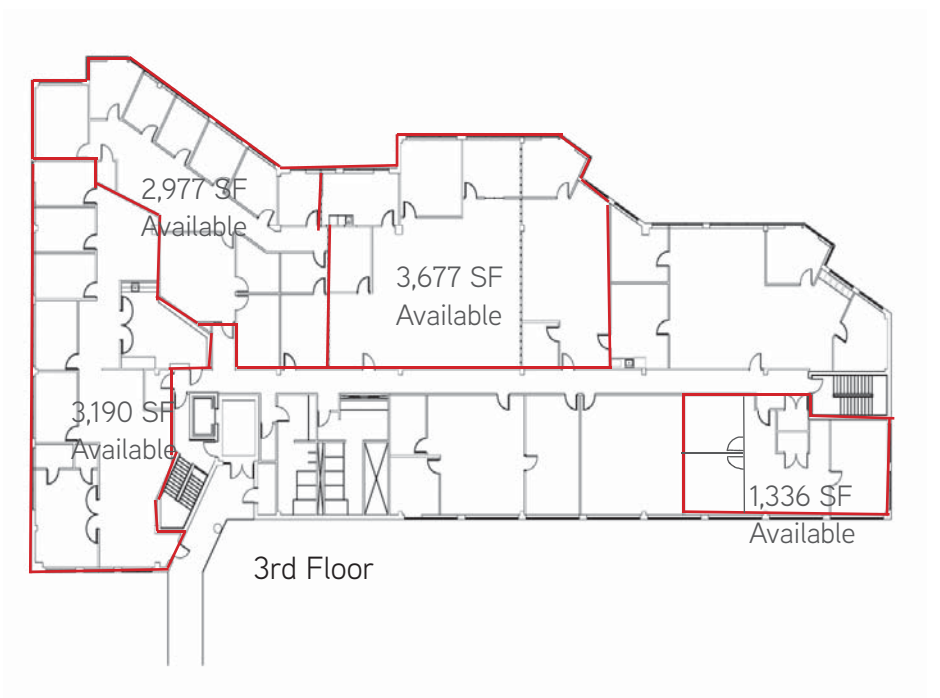
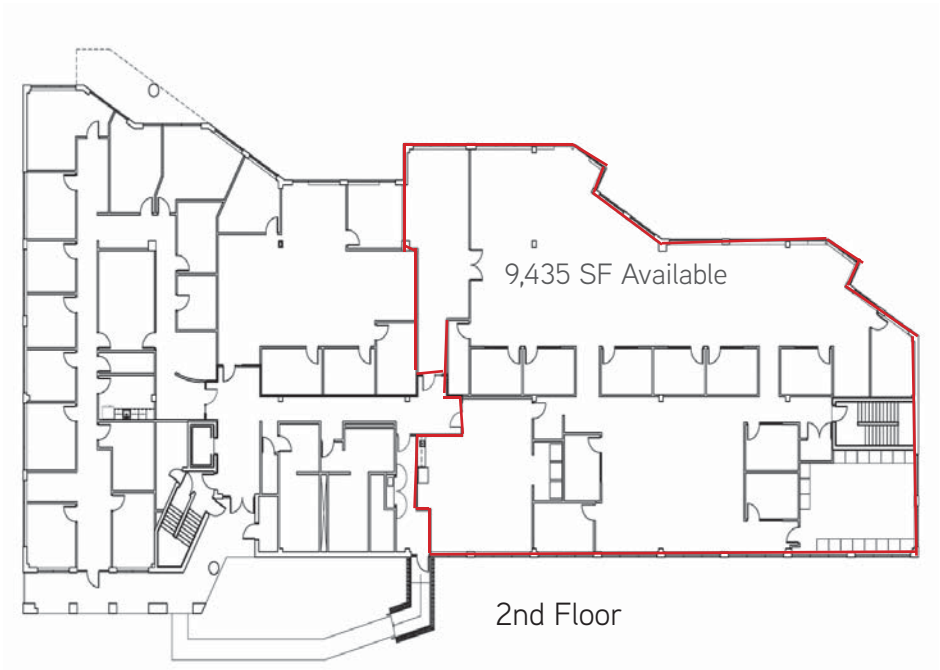
- > Suites ranging from 1,336 SF to 9,345 SF
- > Ample free parking (6/1,000 ratio)
- > Aggressive Broker Commissions on qualified deals.
- > Lease Rate - ~~\$15.75/SF Full service gross~~
- > **Rate reduction - \$13.75 / SF**

BOB SHAW
864 527 5437 DIRECT
bob.shaw@colliers.com

COLLIERS INTERNATIONAL
201 East McBee Avenue, Suite 201
Greenville, South Carolina 29601
www.colliers.com/Greenville

420 East Park Avenue > Floor Plans

Available spaces outlined in red



Contact Us

BOB SHAW

864 527 5437 DIRECT

864 297 4950 MAIN

864 527 5444 FACSIMILE

bob.shaw@colliers.com

COLLIERS INTERNATIONAL
201 East McBee Avenue, Suite 201
Greenville, South Carolina 29601

www.colliers.com/Greenville

Colliers International Greenville, LLC, is an independently owned and operated business and a member firm of Colliers International Property Consultants, an affiliation of independent companies with over 480 offices throughout more than 61 countries worldwide. Information contained herein has been obtained from the owner of the property or other sources that we deem reliable. We have no reason to doubt its accuracy, but we do not guarantee it.

